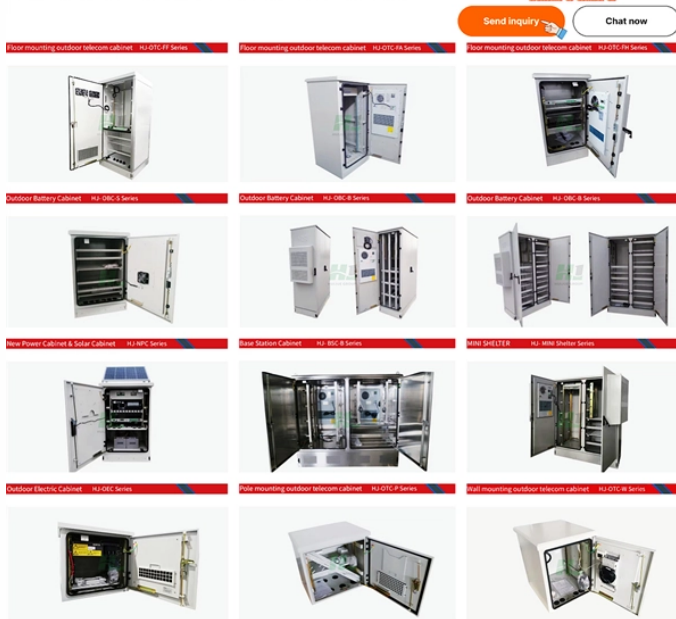


How to identify optical module faults

Powerful manufacturers · 20+ years of experience · Support customization

For more product types, please contact customer service>>>



Overview

How do I know if an optical module is failing?

Common signs include: What is a safe optical power margin?

A safe margin is typically 2-3 dB above calculated link loss to ensure stability. Do dirty fiber connectors affect performance?

Yes. Optical modules (SFP, SFP+, QSFP, QSFP28, etc.) are designed for high reliability in modern networks. Yet in real-world deployments, many data centers, ISPs, and enterprise networks still experience unexpected link failures after installation. These failures are rarely caused by “defective. Customers in the use of optical modules will more or less encounter a variety of failure problems, such as optical module model selection is correct, the use of jumper is correct and some common problems, customers have the ability to judge and have a clear solution, but for some of the use of. As core components of optical communication systems, the proper installation and use of optical modules directly impacts network stability. This article systematically

identifies common anomalies during optical module installation. However, during installation and daily operation, various issues may arise.

How to identify optical module faults



As core components of optical communication systems, the proper installation and use of optical modules directly impacts network stability. This article systematically identifies common ...



What is the most common cause of optical module failure? The most common cause is lack of baseline optical power data, which prevents early detection of signal degradation.



A comprehensive guide on Optical Module Failure diagnosis and prevention to maintain network stability through effective troubleshooting, maintenance, and environmental control.



Customers in the use of optical modules will more or less encounter a variety of failure problems, such as optical module model selection is correct, the use of jumper is correct and some ...



In this guide, we'll delve into common optical transceiver issues and provide practical tips for troubleshooting them effectively. Before diving into ...



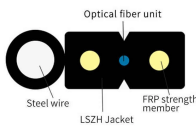
If the optical module is faulty, replace it with the spare part. If the fault is caused by the configuration or environment, advise the customer to optimize the configuration or environment.



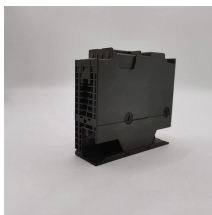
optical module troubleshooting guide covering common faults, compatibility issues, optical link failures, ESD risks, and practical solutions.



The daily use of optical modules may encounter various problems, and I do not know how to solve them. The following will introduce the causes of various problems and how to deal with ...



Understanding the common failure modes of optical transceivers empowers network professionals to proactively prevent issues and rapidly troubleshoot problems when they arise.



In this guide, we'll delve into common optical transceiver issues and provide practical tips for troubleshooting them effectively. Before diving into troubleshooting, let's briefly review what ...

Contact Us

For more information, pricing, or custom data center solutions, please contact us:

Website: <https://www.yoahorroenergia.es>

Email: hello@yoahorroenergia.es

Phone: +233 54 318 7269

Address: Plot 28, Spintex Road, Accra, Greater Accra, Ghana

This document is for informational purposes only. Specifications subject to change without notice.

