

# How to handle the transition around the cable tray



## Overview

At transition points, such as where cables enter raceways or connect to equipment, secure the cables to the tray and provide strain relief to protect terminations. Cable tray transitions are essential in modern electrical infrastructure, providing organized pathways for routing cables between different areas. I believe that open cable tray will be useful and convenient for carrying bundles along the length of the space (about. en completely installed, without damage either to conductors or structural system use maintain spacing or to keep cables in place when the tray is ect the minimum bend radius for cables as they exit the bottom of the cable tray. A rung spacing of 6 to 9 inches (150 to 230 mm) is preferable when. Products such as Shaped Tray, PreForm, WBTFORM and NoSplice have allowed users and installers to provide cleaner, faster and better engineered installs. Our solutions and products are made in the USA and our service and support can assist with any install or product selection questions that you may. We recognize the need for a complete cable tray reference source for electrical engineers and designers. The information has been organized for.

## How to handle the transition around the cable tray



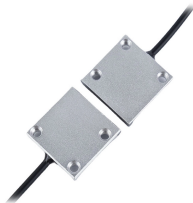
This method statement describes a detailed procedure for properly installing cable trays and conduits for the Feeder System.



A comprehensive guide on cable tray transition methods, tailored for industrial facility cabling setups and maintenance.



The Wire Basket Overhead Cable Tray Routing System is composed of pathways, splices, mounting brackets, and accessories that allow the system to be configured for a wide range of applications and ...



This publication is intended as a practical guide for the proper and safe\* installation of cable ladder systems, cable tray systems, channel support systems and associated supports.



Probably the cleanest and easiest way is to Velcro the cabling to the "floor" of the cable tray and make a nice "sweep" into the conduit. If you're not looking to get expensive grounding bushings you can get ...



WBT offers standard steel dividers that bolt to tray bottoms, or our new Flexible Divider which allows for the divider to transition from straight section through horizontal curves and back to straight sections.



Instead of large conduits, cable channel may be used very effectively to support cable drops from the cable tray run to the equipment or device being serviced and is ideal for cable tray runs involving a ...



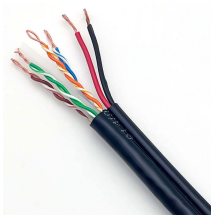
In vertical or angled tray runs, cables should be fastened to the tray's transverse members to keep them secure. In horizontal runs, the weight of the cables often keeps them in place, ...



In designing supports for a cable tray system, consideration should be given to the loads associated with future cable additions and any additional loading that may be applied to the cable tray system (e.g., ...



Cable tray bends play a critical role in ensuring smooth transitions and maintaining the integrity of electrical wiring systems. By providing controlled pathways for cables to navigate obstacles and ...



This guide covers the critical steps, from selecting the right electrical cable tray and performing accurate cable fill calculations to managing a safe cable pull through and ensuring all bonding and grounding ...

## Contact Us

For more information, pricing, or custom data center solutions, please contact us:

Website: <https://www.yoahorroenergia.es>

Email: [hello@yoahorroenergia.es](mailto:hello@yoahorroenergia.es)

Phone: +233 54 318 7269

Address: Plot 28, Spintex Road, Accra, Greater Accra, Ghana

This document is for informational purposes only. Specifications subject to change without notice.

