

## How to find the model number of a KVM switcher



### Overview

Access product support documents and manuals, software, download drivers by operating environment, and view product support videos. You are viewing the most relevant and current results for this product. Did you find what you need?

Was it easy to find?

Page 1 8/16-Port Cat 5 Dual Rail LCD KVM over IP Switch KL1108VN / KL1116VN User Manual [www.kl1108vn.com](http://www.kl1108vn.com) / [www.kl1116vn.com](http://www.kl1116vn.com) User Manual EMC Information FEDERAL COMMUNICATIONS COMMISSION INTERFERENCE STATEMENT: This equipment has been tested and found to comply with the limits for a Class A digital. B020-U08-19-K, B020-U08-19KTAA and B020-U16-19-K come with (8) P778-Series USB/PS2 Combo KVM Cable Kits. ?

I don't know how to save EDID to ATEN's VGA emulator. How do I use UC232A for. Do the legacy entry-level KVM models (F1DK102P, F1DK102U, F1DL102U2, F1DJ102P-B, F1DJ104P-B, F1DB102P2-B, F1DB104P2-B) support Windows 7 or

Windows 8?

3. What Internet browsers are supported by the OmniView IP KVMs?

4. Is the F1DA104Z KVM compatible with Windows 7?

1. Did you find what you need?

Was it easy to find?

HPE KVM Analog Console Switches: Access. All KVM  For Laptops (USB-C/TB)  For Laptops (USB-C/TB)  For Desktop PCs (HDMI/DP)  For Desktop PCs (HDMI/DP) Extenders & More Extenders & More KVM Extenders KVM Extenders HDMI Matrix HDMI Matrix HDMI Switches HDMI Switches Accessories Accessories USB4 80Gbps SSD Enclosures USB4 80Gbps.

## How to find the model number of a KVM switcher



Once the first station KVM switch has ascertained its position in the daisy-chain, power on and plug in the next KVM switch in the installation. Follow this procedure for each KVM switch in the installation.



The Default Hot-Key combination used to switch KVM ports (computers) is SCROLL-LOCK + SCROLL-LOCK. Usually, when the SCROLL-LOCK key is pressed twice in quick succession an audible tone ...



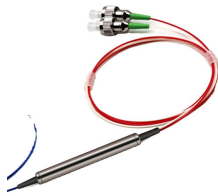
KVM Switches KVM0108A and KVM0116A  
Installation Manual Date: Jun 03 2022 Type: User guide Languages: English



Easily download Tesmart KVM switch manuals and user guides. Find setup instructions, troubleshooting tips, and product specifications to enhance your experience.



Below you will find the product specifications and the manual specifications for the Belkin F1DN204KVM-UN-4. The Belkin F1DN204KVM-UN-4 is a kvm switch designed to facilitate user experience while ...



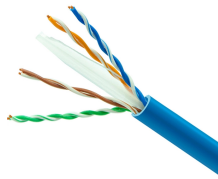
If the number of product channels is larger than the number of sources used, make sure the computers are connected in a row starting from computer #1. For example, if there are 3 channels used, ...



Because it uses TCP/IP for its communications protocol, the KL1108VN / KL1116VN can be accessed from any computer on the LAN, WAN, or Internet - whether that computer is located down the hall, ...



3.3 Cables  
 6. Firmware Upgrade Port  
 6. Grounding Terminal  
 5.1 Pre-Installation Safety Instructions  
 General Safety Instructions  
 Rack Mounting Safety Instructions  
 Standard Rackmounting  
 5.3 Rackmounting for B022-U085  
 4. Grounding  
 5.8 Hot Plugging  
 6.1 Opening the NetDirector Console KVM  
 6.2 Closing the NetDirector Console KVM  
 The LCD OSD allows you to set up and configure the LCD:  
 m m m m  
 6.5 Powering Off and Restarting  
 Port Control  
 Hotkeys  
 Other Hotkeys  
 Num Lock and Minus (-) keys  
 When Hotkey Mode has been invoked:  
 7.3 Selecting the Active Port  
 7.5 Starting Auto Scan  
 7.6 Pausing in Auto Scan  
 7.11 OSD Hotkey Control  
 8.1 OSD Overview  
 8.2 Logging In For the First Time  
 8.6 OSD Functions  
 F2 List Ports (LIST)  
 F3 Set Environment (SET)  
 F4 Administrator (ADM)  
 9.2 Starting the Upgrade  
 9.3 Upgrade Succeeded  
 9.4 Upgrade Failed  
 10.2 OSD Factory Default Settings  
 12. Warranty and Product Registration  
 This KVM switch requires the following custom-wired premium cables:  
 See more on [tripplite.eaton](http://tripplite.eaton) ATEN



A KVM is a “dumb box” as we like to call it that switches from 1 workstation to another with the press of a button. It is not controlling or modifying anything, it hopes to be compatible with most ...



HPE KVM Analog Console Switches: Access product support documents and manuals, software, download drivers by operating environment, and view product support videos.



Search FAQs Find answers quickly by searching by model number or keyword. Learn More.  
Troubleshooting Select a product category for quick answers to the most common troubleshooting ...

## Contact Us

For more information, pricing, or custom data center solutions, please contact us:

Website: <https://www.yoahorroenergia.es>

Email: [hello@yoahorroenergia.es](mailto:hello@yoahorroenergia.es)

Phone: +233 54 318 7269

Address: Plot 28, Spintex Road, Accra, Greater Accra, Ghana

This document is for informational purposes only. Specifications subject to change without notice.

