

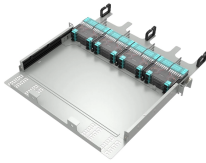
How to divide the circuits in the indoor electrical distribution box



How to divide the circuits in the indoor electrical distribution box



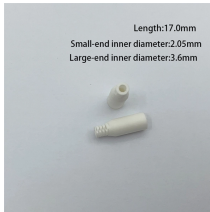
This overview describes how a professional electrician connects a residential electrical circuit breaker panel to the main ...



National standards commonly recommend the subdivision of circuits according to the number of utilization categories in the installation concerned (see Figure Q10):



In this video, we'll walk you through the essentials of wiring your home for electricity, ensuring you understand every step of the process.



Learn how to install a distribution box safely and correctly. Covers wiring, placement, standards, and expert tips for a compliant setup. A distribution box is the heart of any electrical ...



In this video, we'll walk you through the essentials of wiring your home for electricity, ensuring you understand every step of the process.



The only way to split up the circuit to multiple circuits is to do it physically with rewiring. Old houses were typically wired this way with many receptacles and lights on only one circuit.



Find out how to properly wire an electrical panel box with a comprehensive diagram and step-by-step instructions.



The two large hot conductors in a service panel or subpanel connect to the two hot buses that distribute power to house circuits. Those two hot wires (and their buses) are called Phase A and Phase B ...



Wiring Direction: Wiring between the main circuit breaker and each branch circuit breaker in the box generally goes on the left, and the wiring out of the distribution box generally goes on the ...



The following tutorial explains how to wire split-phase (240V single-phase) circuit breakers and load points in a residential distribution panel. Split-phase or 240V single-phase circuits are typically ...



This overview describes how a professional electrician connects a residential electrical circuit breaker panel to the main service wires coming into the home, and to the individual branch ...



Learn how to wire a single phase breaker box with a wiring diagram. Understand the different components and connections involved in setting up a safe and efficient electrical system. Get step-by ...

Contact Us

For more information, pricing, or custom data center solutions, please contact us:

Website: <https://www.yoahorroenergia.es>

Email: hello@yoahorroenergia.es

Phone: +233 54 318 7269

Address: Plot 28, Spintex Road, Accra, Greater Accra, Ghana

This document is for informational purposes only. Specifications subject to change without notice.

