

## How to display optical fiber in an optical cable terminal box



### Overview

Learn how to install a fiber optic termination box step-by-step for FTTH projects. Covers mounting, splicing, routing, labeling, and testing for indoor/outdoor use. They also feature resistance to moisture, impact, chemical exposure. It is used in a terminal box to connect the optical fibers in the optical cable, and to connect the optical cable and the jumper through the terminal box coupler (adapter). Jumper Both ends of the jumper are movable connectors, which connect the pigtail and the device. A. Fiber Termination Boxes (FTBs) are crucial components in fiber optic networks, facilitating the termination, connection, and management of optical fibers. Check and prepare installation tools and accessories.

## How to display optical fiber in an optical cable terminal box



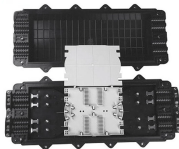
Learn how to install a fiber optic termination box step-by-step for FTTH projects. Covers mounting, splicing, routing, labeling, and testing for indoor/outdoor use.



By following these installation steps diligently, you can establish a robust foundation for managing and distributing optical cables effectively using a fiber distribution box.



Fiber optic terminal box is a device that serves as an interface to connect the incoming fiber optic cable with the butterfly cable, either inside or outside a building. The optical fiber ...



Proper installation and maintenance of fiber optic termination boxes is critical to ensuring the reliability, performance and longevity of your fiber optic network.



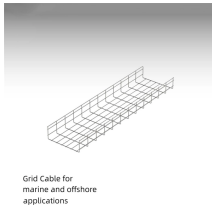
Learn how to safely install your fiber optic cables with the AA17053 Fiber Optic Terminal Box. This user manual provides step-by-step instructions and usage information, including the required installation ...



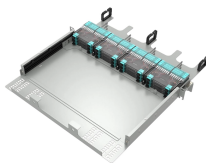
The outdoor optical fiber cable is connected to the terminal box. The purpose is to fuse the optical fiber and the pigtail in the optical cable, and lead it out through a jumper.



By understanding the types, installation steps, and maintenance practices, beginners can embark on the journey of building and sustaining reliable fiber optic networks with confidence.



In this blog, we will discuss the two types of fiber optic cables and the role of a simple yet essential piece of equipment in the fiber laying procedure- the, the Fiber Termination Box, or FTB.



To address this problem, the fiber termination box (FTB) was created to protect the fragile fiber terminals and provide a simple and clear way to manage the incoming and outgoing cables.



This model is specifically engineered to serve as a termination point for fiber cables connecting to drop cables in FTTx network systems. It integrates fiber splicing, splitting, distribution, ...

## Contact Us

For more information, pricing, or custom data center solutions, please contact us:

Website: <https://www.yoahorroenergia.es>

Email: [hello@yoahorroenergia.es](mailto:hello@yoahorroenergia.es)

Phone: +233 54 318 7269

Address: Plot 28, Spintex Road, Accra, Greater Accra, Ghana

This document is for informational purposes only. Specifications subject to change without notice.

