

How to convert an optical port module to an electrical port and connect the wires



Overview

The SFP to RJ45 solution involves inserting a Gigabit Ethernet module into the Gigabit optical port of a device to connect it to an Ethernet cable, which is then connected to the electrical port of the opposite device. Regular 10 Gigabit optical modules cannot fulfill this task, whereas electrical port optical modules perfectly undertake this. The SFP port is a built-in optical port of a Gigabit Ethernet switch, so it cannot be directly connected with a twisted pair or a jumper. It needs to be connected to an optical module first, and then it can be transmitted with an optical fiber patch cord. For details, see ESD Protection. Determine the model of the new cable.

How to convert an optical port module to an electrical port and connect



An electrical port module, also known as an optical-to-electrical port converter module, is a hot-swappable device with an SFP form factor. It features an RJ45 connector and uses UTP cables as ...



The above is the method of connecting the Gigabit RJ45 electrical port and the SFP optical port introduced by ETU-LINK. From the perspective of the cost of short-distance transmission, ...



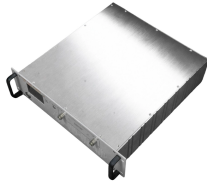
In high-speed data networks, the seamless integration of fiber optic cables with SFP (Small Form-Factor Pluggable) modules is critical for reliable signal transmission.



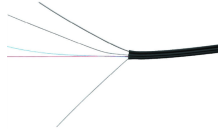
This is exactly where the adapter converter module becomes the most strategic asset in your hardware portfolio. These hardware bridges eliminate the port mismatch problem. By converting ...



How to Connect Fiber to Ethernet: To bridge this gap, you'll need a device that can convert the optical signal to an electrical signal and vice versa. Two primary methods exist: Using a ...



You can connect an optical or SFP+ cable to an optical port. You need to first determine the type of the cable to be connected.



One of its major advantages is that it can convert optical ports on the switch to electrical ports to meet the demand for insufficient RJ45 ports on the switch. As shown in the diagram, the ...



The electrical port module, also known as the optical port to electrical port module or the photoelectric conversion optical module, is a module that supports hot swapping and is packaged in SFP, with a ...



It receives the optical signal on one port, converts it into an electrical signal, and then retransmits it as an optical signal on the other port using the appropriate laser (e.g., a 1310nm SMF ...



The SFP to RJ45 solution involves inserting a Gigabit Ethernet module into the Gigabit optical port of a device to connect it to an Ethernet cable, which is then connected to the electrical ...

Contact Us

For more information, pricing, or custom data center solutions, please contact us:

Website: <https://www.yoahorroenergia.es>

Email: hello@yoahorroenergia.es

Phone: +233 54 318 7269

Address: Plot 28, Spintex Road, Accra, Greater Accra, Ghana

This document is for informational purposes only. Specifications subject to change without notice.

