

## How to connect wires to a Somali electrical distribution box



### Overview

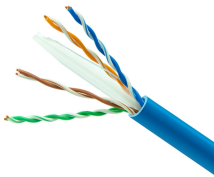
This video shows real on-site footage of electrical installation, demonstrating safe and standardized wiring methods used by professionals. Location determination: Determine the installation position of the circuit breaker according to the position of the. This guide provides step-by-step instructions for connecting a distribution box and highlights key factors to consider during installation. It serves as a. A distribution box is the heart of any electrical system. It is usually equipped with circuit breakers, fuses, terminal connectors, and other components.



## How to connect wires to a Somali electrical distribution box



A cable distribution box is an electrical device used to collect, distribute, and protect electrical power. It is usually equipped with circuit breakers, fuses, terminal connectors, and other ...



The cable or wire size, the rating of breakers, fuse, etc depends on the type of wiring, purpose, and rating of loads. It should be properly selected as per the recommended standards and ...



Learn how to wire a distribution box step by step! This video shows real on-site footage of electrical installation, demonstrating safe and standardized wiring methods used by...



Find out how to properly wire an electrical panel box with a comprehensive diagram and step-by-step instructions.



Wiring Direction: Wiring between the main circuit breaker and each branch circuit breaker in the box generally goes on the left, and the wiring out of the distribution box generally goes on the ...



In this video I will do a demonstration of how to wire a Distribution Board (DB), which Circuit Breakers (C/B) to use with the correct size conductors. We also look at the Earth Leakage and Neutral and ...



Learn how to connect a distribution box with this easy-to-follow, step-by-step guide. From tools and materials needed to common installation mistakes and solutions, this comprehensive article will ...



Connect the input and output wires to the corresponding terminals of the distribution box. Then press the wire onto the terminal with a wire stripper, or tighten the wire with screws.



Learn how to install a distribution box safely and correctly. Covers wiring, placement, standards, and expert tips for a compliant setup.



The document is intended to help electrical engineers and supervisors install distribution boards for electrical projects according to contract requirements and specifications.

## Contact Us

For more information, pricing, or custom data center solutions, please contact us:

Website: <https://www.yoahorroenergia.es>

Email: [hello@yoahorroenergia.es](mailto:hello@yoahorroenergia.es)

Phone: +233 54 318 7269

Address: Plot 28, Spintex Road, Accra, Greater Accra, Ghana

This document is for informational purposes only. Specifications subject to change without notice.

