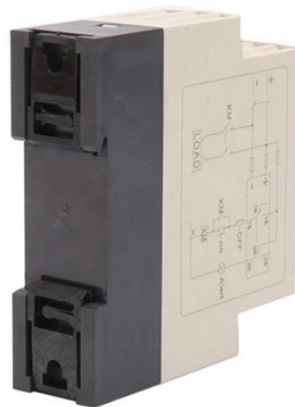


# How to connect a square junction box and its price



## Overview

Installation of 4" square metal junction box with details. This video show wiring of the part of the house for "handy" homeowners who wants to perf. We may be compensated if you purchase through links on our website. This video is based on years of practice as an electrician and also on best of my knowledge of the. Learn how to install a junction box safely, from choosing the right box and mounting it correctly to making secure splices and following basic code-safe practices. To install a junction box correctly, choose a box that matches the wiring method and environment, mount it securely, bring cables in. A junction box is a protective enclosure used to house and protect electrical connections or splices in a wiring system. These cables must be secured to the.

## How to connect a square junction box and its price



Curious about how to install a junction box? A junction box is an IP box or plastic enclosure box used to cover the electrical wires. The box is typically mounted to walls, flat surfaces ...



This video show wiring of the part of the house for "handy" homeowners who wants to perform house improvement by themselves. This video is based on years of practice as an electrician and also on...



If your house has visible wiring splices or if you need to add a new splice to extend a circuit, follow these simple steps to install a junction box.



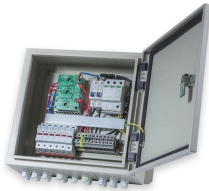
Get free shipping on qualified Square Electrical Boxes, Conduit & Fittings products or Buy Online Pick Up in Store today in the Electrical Department.



Junction box installation costs \$100 to \$300 for parts and labor, depending on the installation location, accessibility, and the electrical box size, material, and indoor or outdoor rating.



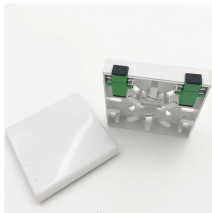
Junction boxes protect electrical wires from damage, prevent shocks, and stop sparks from igniting flammable material nearby. To install one, you'll need to strip the ends off all the wires that will be in the box.



A junction box provides a code-approved place to house wire connections, whether for outlets, switches, or splices. Here's how to install one.



A junction box is a protective enclosure used to house and protect electrical connections or splices in a wiring system. This metal or plastic housing contains wire connections, protecting ...



Learn how to install a junction box safely, from choosing the right box and mounting it correctly to making secure splices and following basic code-safe practices.



One essential component of DIY wiring is the junction box, a crucial element that ensures safe electrical connections. In this blog, we'll guide you through the process of safely installing and ...

## Contact Us

For more information, pricing, or custom data center solutions, please contact us:

Website: <https://www.yoahorroenergia.es>

Email: [hello@yoahorroenergia.es](mailto:hello@yoahorroenergia.es)

Phone: +233 54 318 7269

Address: Plot 28, Spintex Road, Accra, Greater Accra, Ghana

This document is for informational purposes only. Specifications subject to change without notice.

