

How to connect a single-mode dual-core fiber optic interface



Overview

This guide will explain their functions, discuss the role of single-mode LC connectors in modern fiber optic systems, and present the logic for their adoption on a broader scale. A fiber media converter takes an Ethernet signal on copper (RJ-45) and converts it to an optical signal on fiber, or vice versa. There are also fiber-to-fiber versions that translate between different fiber types, wavelengths, or distances. It is possible to connect the two different cable types; however, a media converter must be used to adapt the core sizes and optical. But what happens when you need to connect an existing multi-mode campus network to a new single-mode service provider link?

You can't just splice them together. This is where fiber conversion comes in. I suggest you avoid such setups.

How to connect a single-mode dual-core fiber optic interface



When planning a fiber optic network, one key decision is choosing between single-fiber (BiDi) and dual-fiber optical transceivers. This guide from ETU-Link explains their differences, advantages, and how to ...



Discover the complete guide on converting multimode to single-mode fiber in communication networks. Understand the differences and learn the necessary steps.



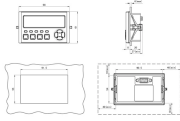
Short answer: Usually yes, you use them in pairs, but the “pair” can be a media converter on one end and a fiber switch (or SFP in a switch) on the ...



Single Mode fibers have a smaller core, allowing light to travel in a single, straight path, ideal for long distances with less signal loss. Multi-mode fibers have a larger core, ...



This guide will explain their functions, discuss the role of single-mode LC connectors in modern fiber optic systems, and present the logic for their ...



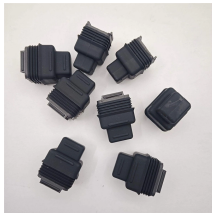
Let's analyze the differences between multimode and single-mode fiber to understand why networks require fiber mode conversion and how to convert multimode to single-mode fiber and vice versa.



Learn how single-mode and multi-mode transceivers differ, compatibility rules, testing tips, and best practices for reliable fiber deployments.



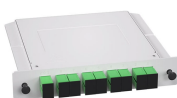
This guide will explain their functions, discuss the role of single-mode LC connectors in modern fiber optic systems, and present the logic for their adoption on a broader scale.



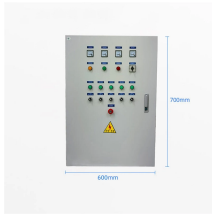
Comprehensive guide on BiDi Optical modules, detailing single-fiber bidirectional connectivity, deployment tips, troubleshooting, and multi-speed ...



It is possible to connect the two different cable types; however, a media converter must be used to adapt the core sizes and optical wavelengths.



Comprehensive guide on BiDi Optical modules, detailing single-fiber bidirectional connectivity, deployment tips, troubleshooting, and multi-speed applications for optimized networks.



Convert fiber between multimode and single mode using smart methods for better speed, longer distance, and reliable network performance.



Short answer: Usually yes, you use them in pairs, but the “pair” can be a media converter on one end and a fiber switch (or SFP in a switch) on the other, as long as both sides speak the ...

Contact Us

For more information, pricing, or custom data center solutions, please contact us:

Website: <https://www.yoahorroenergia.es>

Email: hello@yoahorroenergia.es

Phone: +233 54 318 7269

Address: Plot 28, Spintex Road, Accra, Greater Accra, Ghana

This document is for informational purposes only. Specifications subject to change without notice.

