

How to confirm the A and B ends of an optical cable



ity types, which are Type A and Type B adapters. The main difference between a Type A and Type B adapters. is the way in which the fibers are crossed over. In a Type A polarity adapter, the fibers are ...



It's a fairly simple solution; unplug the LC couplers on the TAPs' network ports A and B and reverse the polarity, only at the end connected to the TAP. If you were to reverse the polarity at ...



Fiber polarity is the direction that light signals travel from one end of a fiber optic cable (link) to the other. A link's transmit signal (Tx) must match its corresponding receiver (Rx) at the other ...



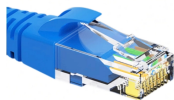
In this blog, we explain how to implement fiber polarity systems using pre-terminated fiber optic cabling – regardless of end-user requirements (simplex/duplex/parallel optics).



In MTP®/MPO cable systems, polarity defines how fibers are mapped from one end of the connector to the other. To support correct Tx/Rx alignment, the industry uses three standard ...



Struggling to identify faults, validate polarity or ensure quality mechanical connector terminations in your fiber optic cables? Visual Fault Locators (VFLs) are a valuable tool that make ...



In MTP®/MPO cable systems, polarity defines how fibers are mapped from one end of the connector to the other. To support correct Tx/Rx alignment, ...



For backbone and riser multifiber cable, installers should always follow the color code and numbering system below for A-B polarity, as defined in TIA-598-C Optical Fiber Cable Color Coding. The ...



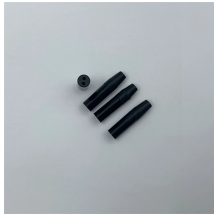
Complete guide to MTP/MPO fiber polarity. Learn Type A, B, and C configurations, connector types, and best practices for reliable fiber optic networks.



In (A-B) polarity, the transmit signal on one end (fiber A) aligns with the receive signal on the opposite end (fiber B). This straight-through connection allows data to flow seamlessly between devices, and ...



In this blog, we explain how to implement fiber polarity systems using pre-terminated fiber optic cabling - regardless of end-user requirements ...



Always label both ends and verify with polarity testers. Make sure cassettes, trunk cables, and adapters are all designed to work together based on polarity type. Many MPO cassettes or ...

Contact Us

For more information, pricing, or custom data center solutions, please contact us:

Website: <https://www.yoahorroenergia.es>

Email: hello@yoahorroenergia.es

Phone: +233 54 318 7269

Address: Plot 28, Spintex Road, Accra, Greater Accra, Ghana

This document is for informational purposes only. Specifications subject to change without notice.

