

# How to configure the IP address of an industrial-grade Layer 2 switch

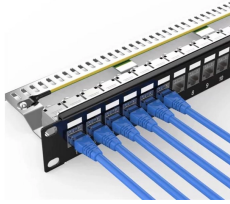


## Overview

Purpose: The switch obtains its IP address from a DHCP server. CLI Example (typical for Cisco/Allied Telesis/Moxa/Siemens): : Management VLAN (may differ per device). Web GUI: Navigate to Network Settings → IP Configuration. Select “DHCP” or. How to configure DHCP vs static IP on an industrial Ethernet switch?

Configuring DHCP vs Static IP on an Industrial Ethernet Switch 1. Accessing the Switch Management Interface Use the switch's console port, web GUI, or SSH (depending on model). x" is the command to assign the IP Address to L2 switch, this IP address is just assigned for management. Configuration of Switch is little different from that of Router or firewall where the interfaces are Layer 3 ports and IP address needs to be assigned to the physical ports. Connect. Extreme Networks, Inc. The reader should in all cases consult representatives of Extreme Networks to determine whether any such changes have been made. Text Conventions The following tables list text conventions that are used throughout this guide.

## How to configure the IP address of an industrial-grade Layer 2 switch



After initially configuring and connecting the AT-S230-10GP switch to the network, you can configure the device by using the remote access method, such as Telnet or Secure Shell (SSH), to access the CLI ...



Configure an IP address 203.0.113.1/24 and a gateway address 203.0.113.2 for external network. After the configurations are complete, PC1 and PC2 can ping the external network IP address ...



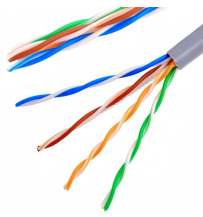
As shown in Figure 1, connect the router to switch 1 and switch 2. Connect host A and host B to switch 1 and switch 2, respectively. Configure the network to meet the following requirements: · Host A ...



The industrial switch configuration manual is a detailed guide that instructs users on how to correctly install, configure, and optimize industrial-grade switch equipment.



Learn how to configure DHCP and static IP on industrial Ethernet switches for reliable network management.



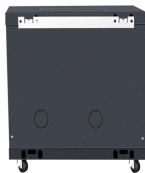
The system broadcasts an ARP request, containing the IP address, and the device with that IP address sends back its MAC address so that traffic can be transmitted.



Contrary to Router/Firewall configuration, Layer 2 Switch has ports configured as Layer 2 which can't be given an IP address, instead SVI (Switched Virtual Interface) needs to be assigned an ...



With a layer 2 switch the vlan interface is used to contact the switch typically for management purposes. With a layer 3 switch you can have many vlan interfaces and the switch will ...



This user guide describes the commands and parameters of the Command Line Interface (CLI) as implemented in the current version of ISW-Series Managed Industrial Ethernet Switch software.



This video is ideal for network engineers, plant IT specialists, and industrial automation professionals looking to strengthen their command over Layer 2/Layer 3 switch configuration.

## Contact Us

For more information, pricing, or custom data center solutions, please contact us:

Website: <https://www.yoahorroenergia.es>

Email: [hello@yoahorroenergia.es](mailto:hello@yoahorroenergia.es)

Phone: +233 54 318 7269

Address: Plot 28, Spintex Road, Accra, Greater Accra, Ghana

This document is for informational purposes only. Specifications subject to change without notice.

