

How to add network segments to the core switch



Overview

VN-Segments can be configured with the configure sync command for VPCs. Creates a switch profile that contains a predetermined configuration. Defines the network global ID. The segmentation-id range is from 4096 to. Network segmentation with switches involves dividing a network into smaller, isolated segments to enhance security, improve performance, and simplify management. You may. In network communication, the interconnection between different network segments is crucial. CE links (access and trunk) carry traditional VLAN tagged/untagged frames. Just clear, actionable steps that will help you optimize performance, enhance security, and manage your network like a pro.

How to add network segments to the core switch



Step-by-step instructions for configuring VLANs using network hardware. Learn how to segment your network, improve security, and manage traffic with clear, practical examples.



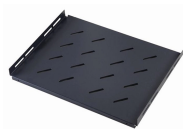
The core layer is critical, yet very simple to design, and allows for network evolution quite easily. Point-to-point links are used between each element, and Fortinet recommends using the MLAG and dual ...



Learn how to add an NSX network segment to use for virtual machines (VMs) in vCenter Server.



When different departments or devices with different functions are in different network segments, the switch can connect these segments to realize the ...



Switches with VLAN capability can assign the tagged frames to specific VLANs and therefore set up logically separated networks based on a shared infrastructure.



This feature uses a 24-bit tag also referred to as a Virtual Network Identifier (VNI). CE links (access and trunk) carry traditional VLAN tagged/untagged frames.



When different departments or devices with different functions are in different network segments, the switch can connect these segments to realize the communication between ...



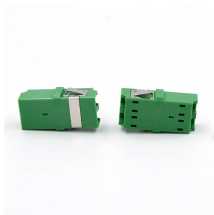
The following steps guide you through configuring a core network for a policy version using the Policy versions link on the AWS Network Manager console. Before adding a segment you must first have ...



how to set up a secure, efficient separate network on an existing switch with easy, actionable steps for better performance.



As a result, the virtual network infrastructure is decoupled from the physical network infrastructure. That is, you can create segments dynamically without any configuration of the physical network ...



By following this comprehensive guide, you can effectively learn how to configure a switch for network segmentation, enhancing your network's security, performance, and manageability.

Contact Us

For more information, pricing, or custom data center solutions, please contact us:

Website: <https://www.yoahorroenergia.es>

Email: hello@yoahorroenergia.es

Phone: +233 54 318 7269

Address: Plot 28, Spintex Road, Accra, Greater Accra, Ghana

This document is for informational purposes only. Specifications subject to change without notice.

