

How to add a VLAN on a Huawei core switch



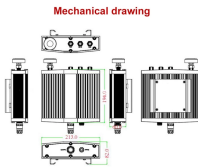
Overview

Use the `vlan` command to create VLANs. When receiving an untagged frame, the switch adds the VLAN tag mapping the MAC address of the frame to the frame. This improves. Connect to the device using SSH or the console port Log in to the management interface using your username and password. For example: Replace USERNAME with the new username, set the password, define service-type (telnet, ssh, etc.), and specify. ☐☐ In this video, I will show you step by step on how to configure VLAN on Huawei switch. Look at the following topology. Follow along to set up your switch effectively! To begin, access the switch's Command-Line Interface (CLI) through either a. Different services need to be assigned to different VLANs and distributed to different remote networks. Associate IP subnets with VLANs so that VLANs of packets can be determined based on the source IP addresses or specified network.

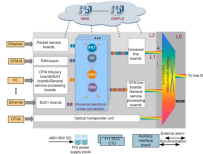
How to add a VLAN on a Huawei core switch



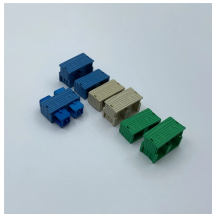
Virtual Local Area Network (VLAN) technology divides a physical LAN into multiple broadcast domains, each of which is called a VLAN. Hosts within a VLAN can communicate with each other but cannot ...



In the figure below, the switch connects to the office server, production server, and disaster recovery server on different network segments. Different services need to be assigned to ...



Configuring a Huawei switch to assign an IP address to VLAN 1 and binding multiple ports to it can seem challenging, but this step-by-step guide ...



Configuring a Huawei switch to assign an IP address to VLAN 1 and binding multiple ports to it can seem challenging, but this step-by-step guide simplifies the process.



You can configure interface-based VLAN assignment on the switch so that the switch adds interfaces connected to users using the same service to the same VLAN. Users in different VLANs cannot ...



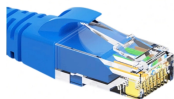
In this lesson we will learn Huawei VLAN Configuration on Huawei Switches. VLAN Configuration is one of the key lessons for Huawei HCNA.



How to create VLANs on Huawei switches? Huawei switches are network switches developed and produced by Huawei Technologies Co. Ltd., a leading global provider of information ...



□□ In this video, I will show you step by step on how to configure VLAN on Huawei switch.



This text is a guide detailing Basic Command Line Interface (CLI) Commands on Huawei brand switches. It provides step-by-step instructions for users to perform fundamental network configuration ...



Configuring VLANs on a Huawei switch isn't just about typing commands—it's about crafting a network that's resilient, agile, and secure. While the basics get you online, mastery turns ...



Learn to configure VLANs, trunks, and VLANIFs on Huawei switches. Step-by-step tutorial with examples for network configuration.

Contact Us

For more information, pricing, or custom data center solutions, please contact us:

Website: <https://www.yoahorroenergia.es>

Email: hello@yoahorroenergia.es

Phone: +233 54 318 7269

Address: Plot 28, Spintex Road, Accra, Greater Accra, Ghana

This document is for informational purposes only. Specifications subject to change without notice.

