

# **How much does a remote monitoring type of energy management system for 5G base stations cost**



## How much does a remote monitoring type of energy management s



Setting up a 5G base station is expensive, with costs ranging from \$100,000 to \$200,000 per site. This price includes hardware, installation, site rental, and maintenance.



While not sufficient to power entire base stations, these technologies can supplement traditional power sources and reduce overall energy demand. Implementing smart sleep modes and ...



You need reliable connectivity to transmit monitoring data from your base stations to your central management platform. Your choice depends on site location, data needs, and budget.



First, rather than replacing legacy mechanisms entirely, hybrid energy management frameworks that combine proven pre-5G techniques (e.g., sleep modes and power control) with AI ...



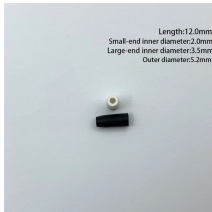
This solution not only focuses on energy saving and consumption reduction but also aims to achieve intelligent and digital management of 5G base stations. This article will delve into the key elements of ...



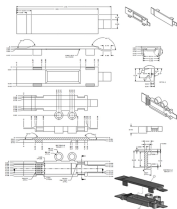
To achieve low latency, higher throughput, larger capacity, higher reliability, and wider connectivity, 5G base stations (gNodeB) need to be deployed in mmWave. Since mmWave base stations (gNodeB) ...



Further, this research is accelerated in order to bring about the best possible (optimal) cost for the system by adopting a range of optimization approaches namely particle swarm optimization, artificial ...



This solution not only focuses on energy saving and consumption reduction but also aims to achieve intelligent and digital management of 5G base stations. This ...



Challenge: Remote base stations are prime targets for theft, particularly of copper feeders and batteries, with each incident costing up to ...



Challenge: Remote base stations are prime targets for theft, particularly of copper feeders and batteries, with each incident costing up to \$10,000 in downtime and replacements.



The cost of base stations and antennas can range from \$50,000 to \$200,000 based on coverage needs. The number of units required will depend on the area size and the density of users.



Acrel proposes a smart power cloud platform for base stations that integrates energy sensors, intelligent miniature circuit breakers, and air conditioning controls to enable fine-grained ...

## Contact Us

For more information, pricing, or custom data center solutions, please contact us:

Website: <https://www.yoahorroenergia.es>

Email: [hello@yoahorroenergia.es](mailto:hello@yoahorroenergia.es)

Phone: +233 54 318 7269

Address: Plot 28, Spintex Road, Accra, Greater Accra, Ghana

This document is for informational purposes only. Specifications subject to change without notice.

