

How many optical modules does the access switch need



Overview

Each module provides 100 Mbps or 1000 Mbps optical connections. The type of switch, router, or other component determines the compatible type of SFP module. Use only Extreme Networks-certified SFP, SFP+, and SFP28 modules in the SFP port on the hardware. The answer is nuanced—optical transceivers combined with switches form a complete optical switching system. Physical Architecture and Interface. Training a GPT-3-scale cluster, typically comprising around 1000 GPUs, requires approximately 2500 x 200G optical modules or 4000 x 400G optical modules. Think of it as the “translator” for your network equipment, converting electrical signals into optical signals. That's where 1000BASESX SFP becomes a common “default choice” for short-range optical connectivity. With the continuous evolution of network architectures, the number of optical modules required per server rack has increased significantly.

How many optical modules does the access switch need



Critical Compatibility Principle: Whether two optical modules can interconnect depends primarily on their optical signal compatibility, NOT the electrical connector type.



Read about the latest technology and events related to Cisco's optical transceivers. Watch short videos explaining transceiver concepts and how Cisco Optics make life easier for network operators.



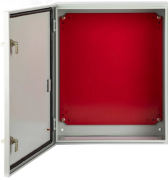
Explore the factors influencing the number of optical modules required for GPUs in various networking architectures. Learn about different network card and switch models, the scalable unit ...



So, how many optical modules does a data center typically need? In this post, we will explore the usage of optical modules in traditional three-tier, improved three-tier, and emerging two ...



For continued compliance with the above laser safety standards, only approved Class 1 modules from our approved vendors should be installed in Alcatel-Lucent products.



At its core, 1000BASESX SFP refers to a Gigabit Ethernet optical transceiver designed for short-range transmission over multimode fiber. It combines a standardized Ethernet optical interface (1000BASE ...



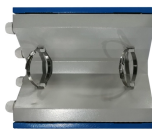
The type of switch, router, or other component determines the compatible type of SFP module. Use only Extreme Networks-certified SFP, SFP+, and SFP28 modules in the SFP port on the hardware.



How Do I Select Optical Modules for Server Access and Switch Interconnection? In typical data center scenarios, the proper optical modules to use between servers and access ...



Understand the core function, compare data rates (1G to 25G), learn critical compatibility rules, and follow our 5-step checklist for selecting the perfect SFP optical module for your network build.



Read the definitive 2026 guide on SFP modules. We explain Single Mode vs Multimode, DDM diagnostics, and how to choose the right transceiver for Cisco, Juniper, and more.

Contact Us

For more information, pricing, or custom data center solutions, please contact us:

Website: <https://www.yoahorroenergia.es>

Email: hello@yoahorroenergia.es

Phone: +233 54 318 7269

Address: Plot 28, Spintex Road, Accra, Greater Accra, Ghana

This document is for informational purposes only. Specifications subject to change without notice.

