

# How many nuts are suitable for cable tray supports



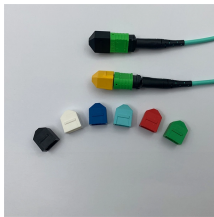
## Overview

Cable tray support quantity can be calculated using a simple formula:  $\text{Support Quantity} = \text{Total Length} \div \text{Support Spacing} + 1$ .  $20 \div 2 + 1 = 11$  supports. In a typical project, a 20-meter cable tray with 2-meter spacing requires 11 supports. The National Electrical Code (NEC) is the ultimate authority for any cable tray installation. This article details everything from permitted uses and cable types to fill capacities and maintain spacing or to keep cables in place when the tray is bent the minimum bend radius for cables as they exit the bottom of the cable tray. The Ladder Tray features light, rugged, tubular steel construction.

## How many nuts are suitable for cable tray supports



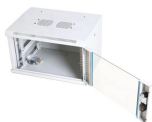
Many, as a general term, refers to a large number, quantity, or amount. It indicates a plural or multiple existence of something, suggesting that there is a significant or considerable quantity of that ...



Definition of many determiner in Oxford Advanced Learner's Dictionary. Meaning, pronunciation, picture, example sentences, grammar, usage notes, synonyms and more.



You use many to indicate that you are talking about a large number of people or things. I don't think many people would argue with that. Not many films are made in Finland. Do you keep many books ...



With a support span of 20" and a total working load of 80 lbs/ft, a NEMA Class 20B tray rated at 75 lbs/ft will not be adequate. A NEMA Class 20C tray, rated at 100 lbs/ft, will be required.



Some of these criteria include the required load that the cable tray must support, the distance between the cable tray supports, and ease of handling and installation.



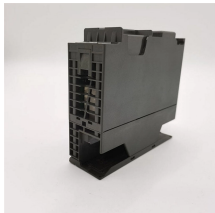
This guide covers the critical steps, from selecting the right electrical cable tray and performing accurate cable fill calculations to managing a safe cable pull through ...



Trapeze hangers (Figures 8) are suitable for use with cable ladder and cable tray, supported by threaded rods hung from ceiling brackets, channel support systems or from beam clamps attached to ...



We use the quantifiers much, many, a lot of, lots of to talk about quantities, amounts and degree. We can use them with a noun (as a determiner) or without a noun (as a pronoun). ...



Cable tray length is selected based on the load to be supported, the distance between the supports (also referred to as the span), and handling and installation constraints.



Learn how to accurately calculate cable tray support quantities in electrical installation projects. Our guide covers methods, tools, and practical ...



The load capacity of the cable trays according to the support width can be read off in the diagram using load curves - here, shown as an example for a cable tray with the tray widths 100 to 600 mm.



"Many" describes a large quantity of countable items or people, commonly used when the exact total isn't important or known. It is one of the most essential quantifiers in the English language, ...



This article explains the main requirements and good practices for cable tray systems, including tray types, materials, loading, supports, bonding, cable selection, and installation details.



Many definition: Amounting to or consisting of a large indefinite number.



The meaning of MANY is consisting of or amounting to a large but indefinite number. How to use many in a sentence.



For heavy power cables or long spans, ladder trays typically perform best. For mixed small cables, perforated works well. Width is set by total cable area plus spare factor; depth helps ...



The document discusses cable support systems used internationally. It provides information on calculating cable loads using cable weight tables to determine the ...

## Contact Us

For more information, pricing, or custom data center solutions, please contact us:

Website: <https://www.yoahorroenergia.es>

Email: [hello@yoahorroenergia.es](mailto:hello@yoahorroenergia.es)

Phone: +233 54 318 7269

Address: Plot 28, Spintex Road, Accra, Greater Accra, Ghana

This document is for informational purposes only. Specifications subject to change without notice.

