

How many gigabytes of optical module can Huawei PTN use



Overview

A PTN 970 supports 40GE interfaces and a maximum of 120 Gbps switching capacity. Suggestions for Power Distribution in Equipment Rooms for Modular Routers Suggestions for Power Distribution in Equipment Rooms for Box-shaped Routers OptiX PTN 7900 and 900 Board Replacement List (Video) What Is SPN?

(Video) OptiX PTN 970C Product Overview PTN Series: Access product manuals, HedEx. The PTN 7900 is a 400G metro transport device developed by Huawei to cope with large 4G traffic. It is mainly positioned at the core aggregation layer and backbone network of a metro transport network to carry mobile services and VIP private line services. The PTN 7900 series has three product. OptiX PTN970 a new generation of multi-service transmission platforms for packet transmission. OptiX PTN970 has functions such as all-media access, all-media synchronization, and all-media management. This product documentation offers comprehensive insights into the functionalities, applications, and supported accessories of the OptiX PTN 905. The PTN 900 series, with the case-shaped design, are 5G-oriented access-layer products

that meet the GE/10GE/25GE site-to-site requirements. The series supports 50GE/100GE large-capacity ports to meet 5G ultra-broadband bearer requirements and low-speed service ports such as E1/STM-1 ports to.

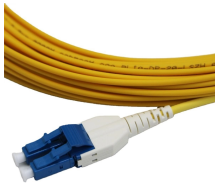
How many gigabytes of optical module can Huawei PTN use



It summarizes several products in the series - PTN 906A, PTN 905B/D, PTN 910-F, PTN 910, PTN 950, and PTN 960 - and their key specifications and features, which include compact designs, support for ...



The PTN 7900 series has three product forms: PTN 7900-32, PTN 7900-24, and PTN 7900-12. The PTN 7900 series supports ultra-large ports such as 200GE, 100GE, and 50GE, and supports mobile ...



PTN 900 Series OptiX PTN 900: Access product manuals, HedEx documents, product images and visio stencils.



This product documentation offers comprehensive insights into the functionalities, applications, and supported accessories of the OptiX PTN 905, making it an indispensable resource for IT ...



It summarizes several products in the series - PTN 906A, PTN 905B/D, PTN 910-F, PTN 910, PTN 950, and PTN 960 - and their key specifications and features, ...



Working at the PTN core layer, Huawei's OptiX PTN 7900 supports 40 GE/100 GE interfaces — or replace with a 400 GE board — with forwarding capacity up to 3.84 Tbit/s.



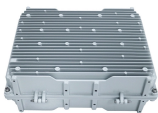
PTN 900 Series OptiX PTN 900: Access product manuals, HedEx documents, product images and visio stencils.



A PTN 970 supports 40GE interfaces and a maximum of 120 Gbps switching capacity. PTN 970s support various service interfaces, such as E1, STM-1, FE, GE, and 10GE interfaces, providing ...



(Video) OptiX PTN 970C Product Overview. PTN Series: Access product manuals, HedEx documents, product images and visio stencils.



To help an optical module keep stably running, set the optical power of the optical module at least 3 dBm more than the receiver sensitivity or to a middle value between the receiver sensitivity and ...



The OptiX PTN 970C is 2 U high and provides a maximum forwarding capacity of 190 Gbit/s. It supports various service interfaces, such as 50GE, 25GE, 10GE, GE/FE, E1, and STM-1.

Contact Us

For more information, pricing, or custom data center solutions, please contact us:

Website: <https://www.yoahorroenergia.es>

Email: hello@yoahorroenergia.es

Phone: +233 54 318 7269

Address: Plot 28, Spintex Road, Accra, Greater Accra, Ghana

This document is for informational purposes only. Specifications subject to change without notice.

