

How many electrical conduits need to be cable trayed



Overview

Due to their exposure to the open air because of the cable trays, the wires contained within need a very durable outer covering. The regulations dictate that the cables must either be Type TC (also known as Tray Rated) or must be metal-armored (Type MC). The short answer is no. Cable tray types, fill rules for single-conductor and multiconductor cables, ampacity derating, separation requirements, and when to use tray vs conduit. When properly selected and installed, cable trays simplify routing, improve accessibility, and support future expansion while. Size conductors installed in cable tray with NEC 392, NEC 310. Use NEC 392 for tray rules, but still size conductors from NEC 310. Tray fill, spacing, ambient temperature, and sun exposure. AFTER FIREPROOFING AND INSULATION IS INSTALLED 4. NOMINAL MINIMUM SEPARATION BETWEEN CONDUITS OF REDUNDANT CLASS I E DIVISIONS IS 6 INCHES LE MANI ERRATE REDUCED TO 1 INCH FOR CONDUITS ROUTED THROUGH WALL AND FLOOR PENETRATIONS, AND ON CONCLUIT RUNS WHERE THE SEISMIC ATTACHMENT CRITERIA, AS SHOWN. NEC Article 392 governs cable tray systems. Firestop systems are required at penetrations.

How many electrical conduits need to be cable trayed



Master NEC Article 392 with our comprehensive guide. Learn essential cable tray requirements for installation, grounding, and fill capacity to ensure full electrical compliance.



Calculate conduit fill capacity based on wire size, type, and conduit dimensions. NEC-compliant. Free, fast, and perfect for electricians & engineers.



TO CABLE TRON OUEST * 4 -2 CONDUIT (SE. NOTE 4) . EP.



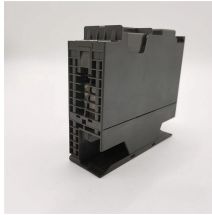
This article provides a comprehensive framework that governs various aspects of cable tray installations, including the types of cables that are deemed acceptable for use, requirements for ...



Tray cables are fundamentally designed for use in cable trays rather than conduit. However, conduit becomes necessary when cables are underground and not direct-burial rated, in ...



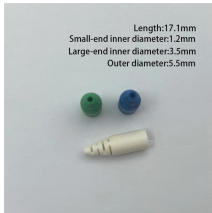
This article explains the main requirements and good practices for cable tray systems, including tray types, materials, loading, supports, bonding, cable selection, and installation details.



This guide covers the cable tray types and their appropriate applications, the fill rules for each configuration, ampacity derating requirements, separation of power and signal cables, and the ...



In industrial setups, single insulated conductors can be used in cable trays if they are 1/0 AWG or larger. Cable trays can also be used to transition conductors into equipment through bushed ...



Fill is the amount of tray width or cross-sectional space occupied by cables, which matters because crowded trays trap heat and make maintenance harder. Step-by-Step Cable Tray Sizing ...



Historically, the NEC has allowed cable trays, but has lacked specific guidelines for sizing conductors and using smaller conductors like PV wire and DG cable on rooftops. The 2023 update ...

Contact Us

For more information, pricing, or custom data center solutions, please contact us:

Website: <https://www.yoahorroenergia.es>

Email: hello@yoahorroenergia.es

Phone: +233 54 318 7269

Address: Plot 28, Spintex Road, Accra, Greater Accra, Ghana

This document is for informational purposes only. Specifications subject to change without notice.

