

# How many cores of cable should be used in a secondary distribution box



## Overview

When the load concerned to this type of situation is fed through a multi-core cable, it is necessary to use a 5-Core or 6-Core Cable. In this condition, two (or three) conductors can be used in parallel formation to carry the high amount of generated unbalanced currents. This guide walks you through the simple decision steps engineers use, the common strand counts on the market, and clear rules-of-thumb for different project types so you choose a cable that fits both today's needs and tomorrow's growth. Begin by listing what the network must support now and in five. The number of cable cores is selected based on comprehensive consideration of multiple factors to ensure the rational use of the cable. Generally cable sizing includes below parameters: Here, I am going to describe. Abstract: The design, installation, and protection of wire and cable systems in substations are covered in this guide, with the objective of minimizing cable failures and their consequences. A system with some degree of unbalance (or Unbalanced System).

## How many cores of cable should be used in a secondary distribution



All new multicore cables with more than 7 cores shall be specified with at least 20% spare capacity (after rounding up) for future use. E.g. a 19 core cable must have at least 4 spare cores after completion of ...



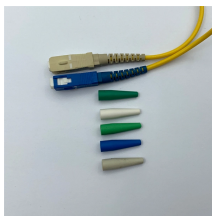
This guide walks you through the simple decision steps engineers use, the common strand counts on the market, and clear rules-of-thumb for different project types so you choose a cable that fits both ...



In the systems fed with single core cables; the cable arrangement and phase sequences should be applied as stated below in single row sequence. There are ...



This electrical box fill calculator provides estimates based on standard National ...



Here's a quick guide: 1□ Single-Core Cable: Contains one conductor – typically used for power distribution or grounding in large systems. 2□ Two-Core Cable: One phase and one neutral ...



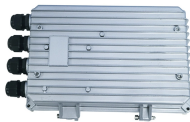
□□ Key Insight: The 40% fill rule for three or more conductors is most commonly used in electrical installations. This provides adequate space for heat dissipation and wire pulling while ...



This electrical box fill calculator provides estimates based on standard National Electrical Code (NEC) and Canadian Electrical Code (CEC) requirements. Results should be verified against the most ...



In 1kV and below three-phase four-wire low-voltage distribution system, when the protection line and the neutral line share the same conductor, a 4-core cable should be used, and a 3 ...



Abstract: The design, installation, and protection of wire and cable systems in substations are covered in this guide, with the objective of minimizing cable failures and their consequences.



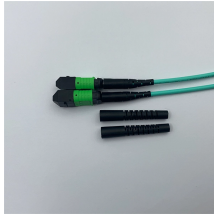
When the load concerned to this type of situation is fed through a multi-core cable, it is necessary to use a 5-Core or 6-Core Cable. In this condition, two (or three) conductors can be used ...



In the systems fed with single core cables; the cable arrangement and phase sequences should be applied as stated below in single row sequence. There are many configurations about the systems ...



When the load concerned to this type of situation is fed through a multi-core cable, it is necessary to use a 5-Core or 6-Core Cable. In this condition, two (or three) conductors can be used in parallel ...



Abstract: The design, installation, and protection of wire and cable systems in substations are covered in this guide, with the objective of minimizing cable failures and their consequences.

## Contact Us

For more information, pricing, or custom data center solutions, please contact us:

Website: <https://www.yoahorroenergia.es>

Email: [hello@yoahorroenergia.es](mailto:hello@yoahorroenergia.es)

Phone: +233 54 318 7269

Address: Plot 28, Spintex Road, Accra, Greater Accra, Ghana

This document is for informational purposes only. Specifications subject to change without notice.

