

How many cables can be pulled through a cable tray at the same time



Overview

The NEC permits power and signal cables in the same tray under specific conditions. Power cables rated 600V or less and Class 2 or Class 3 signal cables may share a tray if separated by a fixed barrier or if the power cables are separated from the signal cables. Cable tray types, fill rules for single-conductor and multiconductor cables, ampacity derating, separation requirements, and when to use tray vs conduit. Cable tray is the preferred wiring method for industrial facilities, data centers, and large commercial buildings where routing dozens or. Several factors determine the number of cables a cable tray can hold: Cable Tray Size: The width and depth of the tray determine its total area.



How many cables can be pulled through a cable tray at the same time



Can any cable be used in a tray? The short answer is no. Due to their exposure to the open air because of the cable trays, the wires contained within need a very durable outer covering.



The tables below outline the estimated number of cables each tray size can accommodate, covering various types such as CAT5E, CAT6, CAT6A, ...



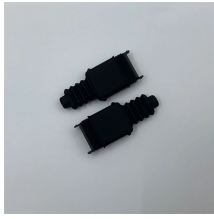
The entire amount of the cross-sectional areas for all of the single conductor cables that are going to be positioned in the cable tray needs to be equal to or less than the permissible cable ...



This calculator determines the maximum number of cables that can be safely housed within a cable tray based on its dimensions and the cross-sectional area of the cables.



When calculating the total cable diameter for placement, it is necessary to sum the individual diameters of all cables in the tray. For example, in an illustrated case, the total diameter ...



Key Takeaways: This rule only applies when both ≥ 1000 kcmil and < 1000 kcmil single-conductor cables are in the same tray. Only the smaller conductors (< 1000 ...



This guide covers the cable tray types and their appropriate applications, the fill rules for each configuration, ampacity derating requirements, separation of power and signal cables, and the ...



By using the Cable Tray Fill Calculator, you ensure your project meets international standards (NEC/IEC). Plan your pathways with the same precision you use to plan your IP ...



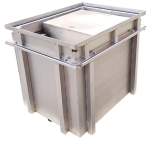
Cables rated 600 volts or less can be installed together in the same cable tray without additional separation, provided they meet the NEC requirements for fill and support . Cables and ...



The the following sections of this page tables and formulas are provided to help determine how many cables can be safely carried by each size wire mesh / cable tray.



The tables below outline the estimated number of cables each tray size can accommodate, covering various types such as CAT5E, CAT6, CAT6A, CAT7, and power cables ...



Key Takeaways: This rule only applies when both ≥ 1000 kcmil and < 1000 kcmil single-conductor cables are in the same tray. Only the smaller conductors (< 1000 kcmil) are subject to the ...



By using the Cable Tray Fill Calculator, you ensure your project meets international standards (NEC/IEC). Plan your pathways with the same precision ...

Contact Us

For more information, pricing, or custom data center solutions, please contact us:

Website: <https://www.yoahorroenergia.es>

Email: hello@yoahorroenergia.es

Phone: +233 54 318 7269

Address: Plot 28, Spintex Road, Accra, Greater Accra, Ghana

This document is for informational purposes only. Specifications subject to change without notice.

