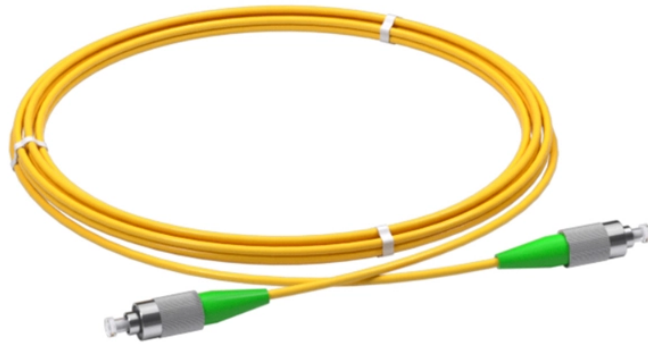


# How long should a cable tray be before adding an expansion joint



## Overview

For a 100° F differential (winter to summer), a steel cable tray will require an expansion joint every 128 feet and an aluminum cable tray every 65 feet. The temperature at the time of installation will dictate the gap setting. Cable tray systems, essential for supporting electrical cables, are subject to thermal expansion and contraction due to temperature fluctuations. The metal shrinks and shortens when it becomes cold. In case there is no space to move it, the tray could become deformed or break the bolts that attach. Alls I have found is 392.



## How long should a cable tray be before adding an expansion joint



Do not strap tray or fitting covers within 3 ft. of expansion guides. Our thermal expansion guides are recommended to provide longitudinal movement from a fixed point. Two guides should be used and ...



LONG Building Technologies, Inc. is one of the largest building integrators in the Western U.S., providing products and services in Building Automation, HVAC Equipment, Mechanical Service, ...



long, yearn, hanker, pine, hunger, thirst mean to have a strong desire for something. long implies a wishing with one's whole heart and often a striving to attain. yearn suggests an eager, restless, or ...



We've printed our weekly ad in the paper for decades — and we're just not ready to stop. Find our weekly ad in all our stores located at the front, or ask an associate for help. Download the CVS ...



Long is used in expressions such as all year long, the whole day long, and your whole life long to say and emphasize that something happens for the whole of a particular period of time.



NEMA has a free PDF installation guide that gives you the information needed to calculate how many expansion joints are needed. The code never tells you that you need one every so many ...



For a 100° F differential (winter to summer), a steel cable tray will require an expansion joint every 128 feet and an aluminum cable tray every 65 feet. The temperature at the time of installation will dictate ...



Are you looking to expand your vocabulary and learn some interesting long words? In this article, we've put together a complete list of long words from A to Z. These words are not only useful ...



Expansion joints must be installed at regular intervals along the cable tray system, especially in areas where significant temperature changes occur. The distance between expansion ...



To determine the number of expansion splice plates you need, decide the length of the straight cable tray runs and the total difference between the minimum winter and maximum summer temperatures. ...



LONG definition: 1. continuing for a large amount of time: 2. being a distance between two points that is more than.... Learn more.



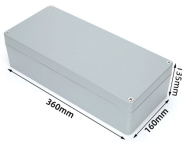
2) Factors like material, temperature range, and installation temperature determine the required gap size and spacing of expansion joints. For a 100°F temperature differential, steel trays require a joint every ...



The adjective long describes something that stretches over a large distance. If you're trying to avoid a prolonged visit with your crazy Aunt Martha, you might decide to take the long way to her house.



Learn how to manage thermal expansion and contraction in cable tray systems with expert tips on expansion joints, guides, and spacing to ensure long-term structural integrity.



According to the document, there are four basic types of cable tray connectors including rigid, expansion, adjustable, and reducer. In the NEMA document, table 3.2 provides the Maximum ...



When crossing building expansion joints and settlement joints, the expansion joints should be set within 500mm on both sides of the joints, and the compensation amount must be  $\geq$  the joint width + 20mm.

## Contact Us

For more information, pricing, or custom data center solutions, please contact us:

Website: <https://www.yoahorroenergia.es>

Email: [hello@yoahorroenergia.es](mailto:hello@yoahorroenergia.es)

Phone: +233 54 318 7269

Address: Plot 28, Spintex Road, Accra, Greater Accra, Ghana

This document is for informational purposes only. Specifications subject to change without notice.

