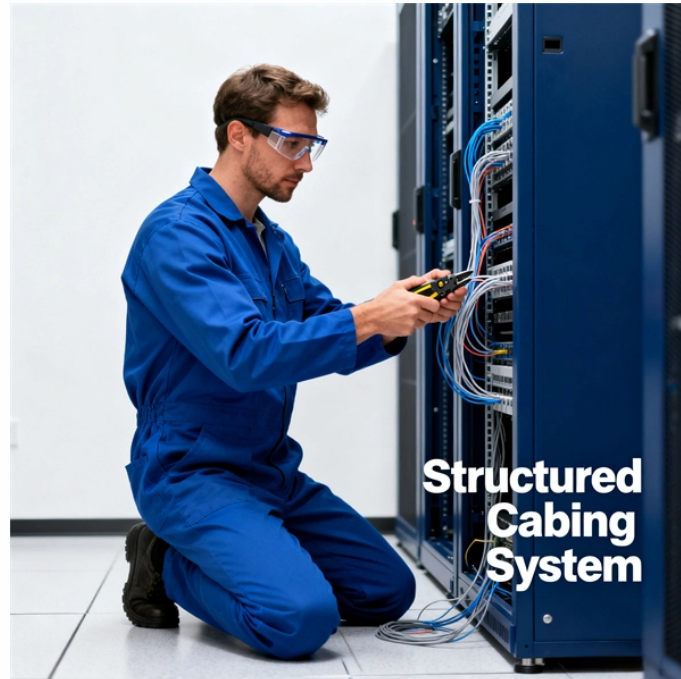


How deep is the buried optical fiber cable



Overview

Standard Residential/Commercial Areas: 24 to 36 inches (60 to 90 cm) deep. If you are planning an underground installation, the first question on your mind is likely: how deep is fiber optic cable buried to ensure safety and compliance?

The short answer, based on general industry standards and the National Electrical Code (NEC), is that fiber optic cable is typically buried 24 to 36 inches deep. When planning a fiber optic network installation, one of the most common questions is: How deep are fiber optic cables buried?

Proper burial depth is critical for the safety, durability, and performance of your communication infrastructure. This guide provides a comprehensive overview of industry standards. Depths are established based on principles of protecting cables from physical impact and dispersing adverse weather effects should they encounter water, frozen temps, etc. Shallower depths are permissible when individual lengths are placed within conduits. For broader context on underground installation, see the full guide.

How deep is the buried optical fiber cable



How Deep Are Fiber Optic Cables Buried? Fiber optic cables are typically buried between 12 and 36 inches (30–90 cm), depending on installation environment, soil conditions, and load requirements. In ...



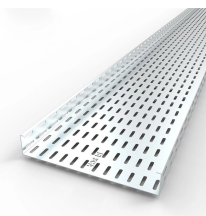
Learn how deep fiber optic cables are typically buried (12–36 inches) and what factors affect their burial depth. Avoid damage and ensure proper installation.



When planning a fiber optic network installation, one of the most common questions is: How deep are fiber optic cables buried? Proper burial depth is critical for the safety, durability, and performance of ...



The question of how deep to bury fiber optic cable has no single answer, as the required depth changes significantly based on location, environment, and specific application.



For protection from heavy equipment, depths up to 48 inches (120 cm) may be advisable. In rocky areas, a minimum of 12 inches (30 cm) is recommended. At road and sidewalk crossings, 36 ...



The short answer, based on general industry standards and the National Electrical Code (NEC), is that fiber optic cable is typically buried between 24 inches (60 cm) and 30 inches (76 cm) deep.



When planning a fiber optic network installation, one of the most common questions is: How deep are fiber optic cables buried? Proper burial depth is critical for the ...



Typically, burial depths range from 0.3 to 1.5 meters, balancing protection with installation cost and accessibility. With fiber deployments accelerating in urban and rural areas, understanding ...



Learn how deep fiber optic cables are typically buried (12-36 inches) and what factors affect their burial depth. Avoid damage and ensure proper ...



Proper burial depth is essential to protect fiber optic cables from physical damage, environmental hazards, and signal degradation. Burial depth varies based on installation type, ...



Conclusion: How Deep is Fiber Optic Cable Buried? Fiber optic cable burial depth typically ranges from 12-48 inches (30-120 cm) depending on soil, climate, cable type, and installation method.



How Deep Are Fiber Optic Lines Buried? The typical burial depth for fiber optic lines varies depending on location and regulations, but generally ranges from 12 to 48 inches (30 to 122 ...

Contact Us

For more information, pricing, or custom data center solutions, please contact us:

Website: <https://www.yoahorroenergia.es>

Email: hello@yoahorroenergia.es

Phone: +233 54 318 7269

Address: Plot 28, Spintex Road, Accra, Greater Accra, Ghana

This document is for informational purposes only. Specifications subject to change without notice.

