



## How big is a 500-gauge cable tray



It shall contain 50 lbs/ft of cables and support 15 lbs/ft of snow load. It is also required to support a 250 pound concentrated static load applied in the center of the tray width. \* CSA Classes D and E are ...



Our TRAY 500-3-G 500 AWG cable is part of our Tray and Instrumentation Cable line. The TRAY 500-3-G cable's construction consists of a stranded bare copper conductor, PVC insulation, and a flame ...



Learn how to calculate the perfect cable tray size and dimensions for your electrical project. This guide covers load capacity, fill ratios, and industry standards.



Explore standard sizes by tray type, understand width and depth limits, and see how to calculate and choose compliant cable tray sizes for real projects.



The document contains details of 10 cable trays including their feeder names, numbers, cable sizes and diameters. Each cable tray section provides the results ...



Use this cable tray sizing calculator to check fill %, select tray size, and comply with IEC 61537 & NEC 392 with formulas, example and checklist.



In this guide, we walk through what tray cables are, the meaning of AWG sizes, a detailed tray cable size chart, key factors in selecting the right gauge, common tray cable types and their availability, ...



Shallow trays of 50mm or less are limited to single-layer cable arrangements with small-diameter cables, while 100mm or deeper trays can accommodate multiple layers or large-diameter ...



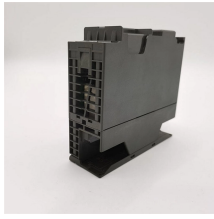
Single conductor cables that are going to be inserted in the cable tray have to be larger than 1/0 AWG (53.5 Sq. mm), and solid cable tray cannot be used for the installation process.



"I like tray schedules that show at least five fields: load amps, conductor size, cable OD, tray width, and spare percentage. If one of those fields is blank, the installation is not ready for a 500 ...



In accordance with its continuous improvement policy, Legrand reserves the right to change the specifications and illustrations without notice. All illustrations, descriptions and technical information ...



Cable tray length is selected based on the load to be supported, the distance between the supports (also referred to as the span), and handling and installation constraints.



Explore standard sizes by tray type, understand width and depth limits, and see how to calculate and choose compliant cable tray sizes for real projects.

## Contact Us

For more information, pricing, or custom data center solutions, please contact us:

Website: <https://www.yoahorroenergia.es>

Email: [hello@yoahorroenergia.es](mailto:hello@yoahorroenergia.es)

Phone: +233 54 318 7269

Address: Plot 28, Spintex Road, Accra, Greater Accra, Ghana

This document is for informational purposes only. Specifications subject to change without notice.

