

# High Voltage Distribution Box Construction Plan



## Overview

View the TI High-voltage power distribution box block diagram, product recommendations, reference designs and start designing. photovoltaic modules at a voltage of approximately 51.5/345kV step-up interface transformer. A motor. The Relevance Inspector will open in the Coveo Administration Console. Content is provided "as is" by TI and community contributors and does not constitute TI specifications. PRINTED COPIES MAY NOT INCLUDE THE MOST UP-TO DATE STANDARDS, REFERENCES, OR REQUIREMENTS. TO EVERY CIRCUMSTANCE OR ELECTRICAL SYSTEM. SRP ENCOURAGES EACH USER TO CONSULT WITH ITS OWN TECHNICAL ADVISOR CONCERNING THE APPLICABILITY OF THESE STANDARDS TO. 4 KV Substation of the ratings indicated above. These Distribution Cabinets are to be outdoor type and to be fabricated out of 2 mm GI sheet steel. The body of the boxes shall have sufficient reinforcement with suitable size of channels keeping a provision for fixing and conforming to general. Energy storage systems (ESS) are now making renewable energy a more viable option by helping to stabilize power output during transient dips or interruptions to power production. From requirement confirmation to design, production, and testing, find out how to

get a reliable, flexible distribution system.

## High Voltage Distribution Box Construction Plan



The plan shall demonstrate, to the satisfaction of ESB Networks, that the control measures to be adopted in the design and construction of the proposed works shall result in successful ...



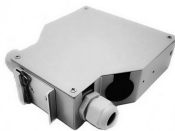
INSULATORS SHALL BE SO PLACED THAT IF THE GUY IS BROKEN BELOW THE INSULATOR OR ANY GUY IS CONTACTED BY AN ENERGIZED CONDUCTOR OR PART, THE VOLTAGE WILL ...



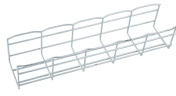
The relay logic will monitor the current as well as breaker status and if the breaker fails to operate after the time expires, relay will trip and lockout all the other 34.5kV circuit breakers as well as the high ...



Technical drawings provide supporting documentation for Ausgrid's Network Standards. 160354-1 11kV underground to overhead (ug/oh) construction - combined earthing or HV only. 162475\_1 Standard ...



The following current and former members of the Substation Subcommittee of the (NRECA), Transmission and Distribution (T& D) Engineering Committee provided invaluable assistance in ...



General Technical Particulars for LT Distribution Boxes : - The L.T. Distribution Boxes should be of the dimensions as per the drawing & details in the table furnished.



The function of the electric power distribution system in a building or an installation site is to receive power at one or more supply points and to deliver it to the lighting loads, motors and all other ...



Learn the step-by-step process of customizing complete distribution boxes tailored to your needs. From requirement confirmation to design, ...



This guideline defines the requirements and standards for design of expansions and modifications to the University medium voltage electrical distribution system.



This guide is based on the latest edition of the National Electric Safety Code (NESC) and was prepared for the design, construction, operation, and maintenance of the Company's electric facilities.



View the TI High-voltage power distribution box block diagram, product recommendations, reference designs and start designing.



Good line design should result in high continuity of service, long life of physical equipment, low maintenance costs, and safe operation. These courses presents a generalized “how to” guide for the ...

## Contact Us

For more information, pricing, or custom data center solutions, please contact us:

Website: <https://www.yoahorroenergia.es>

Email: [hello@yoahorroenergia.es](mailto:hello@yoahorroenergia.es)

Phone: +233 54 318 7269

Address: Plot 28, Spintex Road, Accra, Greater Accra, Ghana

This document is for informational purposes only. Specifications subject to change without notice.

