

# High Temperature Resistance Selection Guide for Island-Grade Air- Cooled Switches



## High Temperature Resistance Selection Guide for Island-Grade Air-C



Description The one-high, bottom mounted device frame consists of a 57-inch instrument compartment stacked over a 38-inch breaker, CPT or draw-out fuse compartment or two 19-inch compartments. ...



Busbar grade copper contact components are structurally superior with greater conductivity than cast contact material. Cast aluminum and copper bronze contact castings are 34 ...



Just like in air design systems, the layout of all electronics should be considered in accordance with their heat dissipation (TDP in Watts) and maximum temperature tolerance requirements (X°C) in relation ...



Installing, starting up, and servicing this equipment can be hazardous due to system pressures, electrical components, and equipment location (roof, elevated structures, etc.). Only trained, qualified ...



The future lies in "smart" high-current switches with embedded sensors to monitor contact temperature, resistance, and actuation count. This data enables predictive maintenance, warning of degradation ...



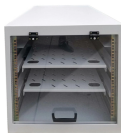
3) The document provides guidance on calculating short-circuit forces on conductors to determine the necessary insulator cantilever strength rating and discusses ...



The 5100 Series" probe design makes it an ideal temperature switch for applications that need switching in an immersion environment. Its construction makes it rugged enough for either high-vibration ...



Because of their higher temperature capabilities and better efficiency improvement at night, air-cooled chillers are ideal candidates for Thermal Battery™ energy storage systems.



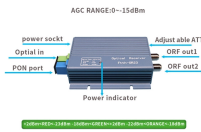
This is intended to be a guide to aid the designer in the selection of an appropriate switch for the intended application. More detailed information is available from vendors and...



Choose from our selection of high-limit temperature switches in a wide range of styles and sizes. Same and Next Day Delivery.



The HR Series is well suited for commercial and military aircraft applications where high temperatures are encountered. The switch design incorporates a choice of an integral pin plunger or roller plunger ...



The on-board temperature sensor has excellent accuracy and linearity over the entire rated temperature range without needing correction or calibration by the user.



The straight temperature extension is designed to remove the switch from direct radiant heat in dry heat processes. Consult the chart on page 26 for application.

## Contact Us

For more information, pricing, or custom data center solutions, please contact us:

Website: <https://www.yoahorroenergia.es>

Email: [hello@yoahorroenergia.es](mailto:hello@yoahorroenergia.es)

Phone: +233 54 318 7269

Address: Plot 28, Spintex Road, Accra, Greater Accra, Ghana

This document is for informational purposes only. Specifications subject to change without notice.

