

# H3C5130 Switch Port Aggregation Configuration



## Overview

This document provides Ethernet link aggregation configuration examples. The configuration examples in this document were created and verified in a lab environment, and all the devices were started with the factory default configuration. Link aggregation provides the following benefits:

- Increased bandwidth beyond the limits of any single link. In an aggregate link, traffic is distributed across the member ports.

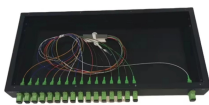
Page 1 H3C S3100V3-EI switch series (Release 6309P01 and later) H3C E500C switch series (Release 6309P01 and later) H3C E500D switch series (Release 6309P01 and later) H3C E128C & E152C switches (Release 6310 and later) New H3C Technologies Co. com Software version: Release 1111 Document version: 6W100-20150615. Page 3 Preface The H3C S5130-HI documentation set includes 1 1 configuration guides, which describe the software. Ethernet link aggregation bundles multiple physical Ethernet links into one logical link called an aggregate link.

- H3C S5130S-HI Switch Series - A robust (modular dual power), cost-effective and easy to deploy Layer 3 access switching solution with POE+ that offers enhanced security and 10GbE uplinks, static route, RIP, OSPF, SDN and IRF enabled, flexible management. The S5130S-HI switch series comes with.

## H3C5130 Switch Port Aggregation Configuration



Port configurations include attribute configurations and protocol configurations. Attribute configurations affect the aggregation state of the port but the protocol configurations do not. To become a Selected ...



Perform this configuration on the MCE. On the VPN site, configure a common static route.



When setting the aggregation states of the ports in an aggregation group, the system automatically chooses a member port as the reference port. A Selected port must have the same operational key ...



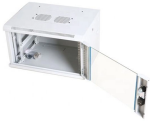
Configure link aggregation on Device A and Device B to meet the following requirements:

- VLAN 10 on Device A can communicate with VLAN 10 on Device B.
- VLAN 20 on Device A can communicate

...



View online or download H3c S5130S-HI Series Installation Manual, Troubleshooting Manual.



High scalability: With IRF2, plug-n-play device aggregation can be achieved by adding one or more switches into the IRF2 stack and enabling IRF2 stacking on the new device.



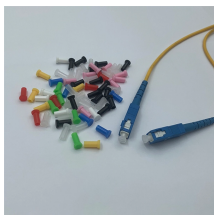
When aggregating ports, the system automatically assigns each port an operational key based on port information, such as port rate and duplex mode. Any change to this information triggers a ...



When aggregating ports, the system automatically assigns each port an operational key based on port information, such as port rate and duplex mode. Any change to this information triggers a ...



View and Download H3C S5130-30S-HI configuration manual online. S5130-30S-HI switch pdf manual download. Also for: S5130-hi series, S5130-54s-hi, S5130-30c-hi, S5130-30c-pwr-hi, S5130-30f-hi, ...



It allows aggregation of physical ports of member switches and physical connections between the IRF system and its upper and lower level switches. The multi-link backup greatly enhances link reliability.

Network ConfigurationAnalysisApplicablehardware and Software VersionsRestrictions and GuidelinesProceduresVerifyingthe ConfigurationConfiguration FilesTo enable traffic from VLAN 10 and VLAN 20to pass through Layer 2 aggregate interface Bridge-aggregation 1, perform thefollowing tasks:

- Configure Layer 2aggregate interface Bridge-aggregation1 as a trunk port.
- Assign the aggregate interface to VLAN 10 and VLAN 20.

See more on h3c .b\_imgcap\_alttitle p strong,.b\_imgcap\_alttitle .b\_factrow strong{color:#767676}#b\_results .b\_imgcap\_alttitle{line-height:22px}.b\_imgcap\_alttitle{display:flex;flex-direction:row-reverse;gap:var(--mai-smtc-padding-card-nested-default)}.b\_imgcap\_alttitle .b\_imgcap\_img{flex-shrink:0;display:flex;flex-direction:column}.b\_imgcap\_alttitle .b\_imgcap\_main{min-width:0;flex:1}.b\_imgcap\_alttitle .b\_imgcap\_img>div,.b\_imgcap\_alttitle .b\_imgcap\_img a{display:flex}.b\_imgcap\_alttitle .b\_imgcap\_img img{border-radius:var(--mai-smtc-corner-card-default)}.b\_hList img{display:block}.b\_imagePair ner img{display:block;border-radius:6px}.b\_algo .vttv2 img{border-radius:0}.b\_hList .cico{margin-bottom:10px}.b\_title .b\_imagePair> ner,.b\_vList>li>.b\_imagePair> ner,.b\_hList .b\_imagePair> ner,.b\_vPanel>div>.b\_imagePair> ner,.b\_gridList .b\_imagePair> ner,.b\_caption .b\_imagePair> ner,.b\_imagePair> ner>.b\_footnote,.b\_poleContent .b\_imagePair> ner{padding-bottom:0}.b\_imagePair> ner{padding-bottom:10px;float:left}.b\_imagePair.reverse> ner{float:right}.b\_imagePair .b\_imagePair:last-child:after{clear:none}.b\_algo .b\_title .b\_imagePair{display:block}.b\_imagePair.b\_cTxtWithImg>\*{vertical-align:middle;display:inline-block}.b\_imagePair.b\_cTxtWithImg> ner{float:none;padding-right:10px}.b\_imagePair.square\_s> ner{width:50px}.b\_imagePair.square\_s{padding-left:60px}.b\_imagePair.square\_s> ner{margin:2px 0 0 -60px}.b\_imagePair.square\_s.reverse{padding-left:0;padding-right:60px}.b\_imagePair.square\_s.reverse> ner{margin:2px -60px 0 0}.b\_ci\_image\_overlay:hover{cursor:pointer} sightsOverlay,#OverlayIframe.b\_mcOverlay sightsOverlay{position:fixed;top:5%;left:5%;bottom:5%;right:5%;width:90%;height:90%;border:0;border-radius:15px;margin:0 ;padding:0;overflow:hidden;z-index:9;display:none}#OverlayMask,#OverlayMask.b\_mcOverlay{z-index:8;background-color:#000;opacity:.6;position:fixed;top:0;left:0;width:100%;height:100%}ManualsLib

## Contact Us

For more information, pricing, or custom data center solutions, please contact us:

Website: <https://www.yoahorroenergia.es>

Email: [hello@yoahorroenergia.es](mailto:hello@yoahorroenergia.es)

Phone: +233 54 318 7269

Address: Plot 28, Spintex Road, Accra, Greater Accra, Ghana

This document is for informational purposes only. Specifications subject to change without notice.

