

H3C and Huawei switches have no optical ports connecting



Overview

Problem: All optical ports cannot be connected, and the indicator lights are not on. Solution: To solve this problem, you can follow these steps: Check if the fiber and optical modules are compatible. Single-mode/multimode fibers and single-mode/multimode optical modules cannot be. For details about the optical modules supported by optical ports on switches, see "Appearance and Structure" of a specific switch model in the Hardware Description. You can also use the Hardware Center to query the. The router provides 1000BASE-T ports. CRC error has occurred or that no system software image is available, reload the system software image.

H3C and Huawei switches have no optical ports connecting



Replace the local port with a new one to verify that the local port is operating correctly. Replace the peer port with a new one to verify that the peer port is operating correctly.



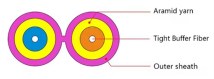
To connect a fiber port, install an SFP, SFP+, or QSFP28 transceiver module in the fiber port and connect optical fibers with LC-type or MPO-type connectors to the transceiver module.



Problem: All optical ports cannot be connected, and the indicator lights are not on. Solution: To solve this problem, you can follow these steps: Check if the fiber and optical modules ...



Check whether the optical module is Huawei-certified. If it is not certified by Huawei, replace it with a Huawei certified one. Remove and reinstall the optical module. If this resolves the ...



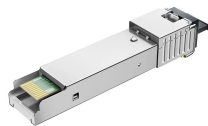
For details about the optical modules supported by optical ports on switches, see "Appearance and Structure" of a specific switch model in the Hardware Description. The following figure shows the ...



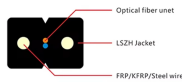
To restrict the use of third-party modules on their devices, host manufacturers usually conduct inspections on the optical modules that are connected, including but not limited to reading ...



So can original HUAWEI optical module be used on H3C switch?The answer is No. Some companies, especially some famous companies, such as CISCO, HUAWEI and H3C etc., they all add password ...



If the problem is not caused by the optical modules, fibers, or intermediate device, connect the switch to another interface or replace the switch to check whether the problem is relevant to the ...



we have hundreds of h3c (comware) switches and routers (former hp company). Over the years i have come to prefer them over cisco. Takes a little getting used and the cli can be a bit quirky at times but ...



H3C and Huawei Ethernet Switches compete in the network equipment category. Huawei appears to have an upper hand due to its strong integration capabilities and inclusion of features ...

Contact Us

For more information, pricing, or custom data center solutions, please contact us:

Website: <https://www.yoahorroenergia.es>

Email: hello@yoahorroenergia.es

Phone: +233 54 318 7269

Address: Plot 28, Spintex Road, Accra, Greater Accra, Ghana

This document is for informational purposes only. Specifications subject to change without notice.

