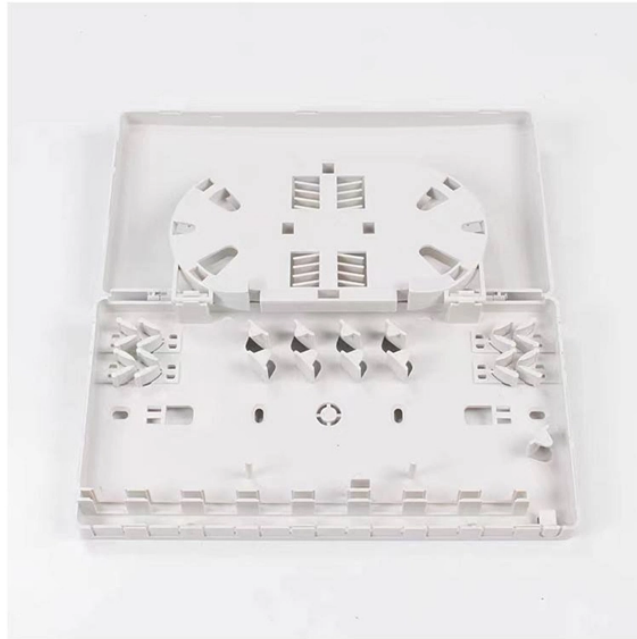


Guatemalan Factory Direct Sales of Explosion-proof Distribution Boxes



Overview

En PROINTELECSA contamos con un amplio stock de equipos y accesorios a Prueba de Explosión, y alianzas con marcas confiables como Appleton, Venas, Rawelt. They offer quality control and full customization services, with a positive review rate of 95. The shell is made of carbon steel or stainless steel by welding, the. CZ Electric Co., located in the Yangtze River Delta Economic Zone-Jiaxing City, Zhejiang Province, is a national high-tech enterprise. The company has the right to self-export and it is a member of the first-level supply. Options range from Ex d (flameproof enclosure) to Ex e (increased safety) and Ex i (intrinsically safe) right through to Ex p (pressurized housing), as well as combinations of different explosion-protection types – always bearing in mind the most efficient solution for your application. BARTEC. Atexdelvalle offers world-class explosion-protected solutions guaranteeing highest quality and performance with no compromise. Manufacture custom made Local Control Stations & Distribution Boxes, local control panel boards and stations, explosion protected control units, distribution. The global market for Explosion-Proof Distribution Box was estimated to be worth US\$ million in 2024 and is forecast to a readjusted size of US\$ million by 2031 with a CAGR

of %during the forecast period 2025-2031.

Guatemalan Factory Direct Sales of Explosion-proof Distribution Box



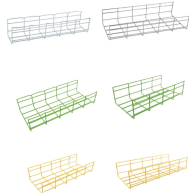
PROINTELECSA una empresa con más de 18 años en el mercado suministrando e instalando equipos y accesorios eléctricos a prueba de Explosión para instalar en ambientes peligrosos y agresivos.



7 basic enclosure sizes Enclosures can be combined (modular system) Available as completely fitted and wired control and distribution units For use in under-ground mines Cable entries available: Direct ...



Shenhai: With 25 years of expertise, we lead in manufacturing high-quality explosion-proof lights, junction boxes, and pipe fittings for hazardous environments.



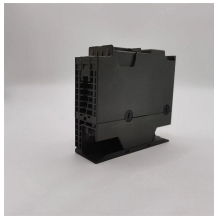
BARTEC offers one of the most extensive ranges of explosion-proof and substance-resistant components, devices, and systems for controlling, switching, and connecting for hazardous areas ...



The main products have obtained ATEX EU explosion-proof certification and IECEx international explosion-proof certification. CZ has agents or offices in 28 countries and regions, and welcomes ...



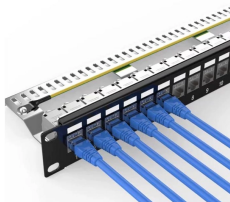
·Equipped with specialized hinge structure, which can prevent the flameproof joints from damage when opening and closing the box, and greatly prolong the service life of box. The boxes can be combined ...



The Explosion-Proof Distribution Box market size, estimations, and forecasts are provided in terms of sales volume (K Units) and sales revenue (\$ millions), considering 2024 as the base year, with ...



This manufacturer and trader primarily sells in Guatemala, Vietnam, and the Philippines, and works with Fortune 500 companies. They offer quality control and full customization services, with a positive ...



Atex control stations, explosion protected control units and distribution boxes made stainless steel maritime grade AISI 316L or AISI 304L. Atex Delvalle provides a custom build facility for Hazardous ...



CZ Electric Co., Ltd., located in the Yangtze River Delta Economic Zone-Jiaxing City, Zhejiang Province, is a national high-tech enterprise. It is an explosion-proof solution provider with safety as its core.

Contact Us

For more information, pricing, or custom data center solutions, please contact us:

Website: <https://www.yoahorroenergia.es>

Email: hello@yoahorroenergia.es

Phone: +233 54 318 7269

Address: Plot 28, Spintex Road, Accra, Greater Accra, Ghana

This document is for informational purposes only. Specifications subject to change without notice.

