

YoAhorroEnergia Data Infrastructure

Guatemala CFP2100G



Guatemala CFP2100G



CFP2100G(2V100Ah) Charged Volume Charge Voltage Charging Current Effect of Temperature on Capacity



Designed to transmit and receive data in both directions on a single fiber for 100G and beyond. Provides an operationally efficient and cost-effective way for telecommunications and cable operators to ...



It works to interconnect equipment with CFP2 model optical interfaces/ports to ...



Note: The MSA recommends host termination resistor value of 560 Ohms, which provides the best balance of performance for both open-drain and active tri-state driver in the module.



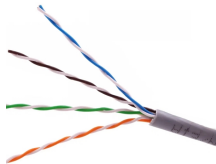
CFP2-100G-LR4-CISCO-C - Transceiver Module 1310nm LC CFP2 from Amphenol ProLabs. Pricing and Availability on millions of electronic components from Digi-Key Electronics.



The Forara 100G CFP4/CFP2/CFP and 40G CFP transceiver modules are hot pluggable, designed for use in 100 Gigabit Ethernet and 40 Gigabit Ethernet links over data center, high-performance ...



The Generic compatible CFP2 optical transceiver module is designed for use in 100 Gigabit Ethernet links over 10 km of single-mode fiber and complies with the CFP MSA CFP2 Hardware Specification ...



ansceiver is a hot pluggable 100Gbps small-form-factor. transceiver module is compliant with IEEE802.3. a and CFP2 MSA. The module is a multi-rate optical tr. Vcc-0.5 Vcc V Output Logic ...



It works to interconnect equipment with CFP2 model optical interfaces/ports to exchange and transmit data of up to 100Gbps over 10km. Through an optical cable or cord using 2 fibers, you will be able to ...



100GBASE-LR4 and OTN CFP2 Transceiver Module (SMF, 1310nm, 10km, LC, DOM) SPECIFICATION



CFP2100G (2V100Ah) Dimensions The Relationship for Open Circuit Voltage and Residual Capacity (25°C)

Contact Us

For more information, pricing, or custom data center solutions, please contact us:

Website: <https://www.yoahorroenergia.es>

Email: hello@yoahorroenergia.es

Phone: +233 54 318 7269

Address: Plot 28, Spintex Road, Accra, Greater Accra, Ghana

This document is for informational purposes only. Specifications subject to change without notice.

