

Galvanized cable tray connecting copper wire



Galvanized cable tray connecting copper wire



For such installations, it is best to use an insulated conductor and to remove the insulation where bonding connections are made to the cable tray, raceways, equipment enclosures, etc. with tin or ...



There are a large number of cable tray fittings that are made compatible with each type of tray. These fittings help in maintaining support of the cable tray system. Shop Graybar's collection of cable tray ...



Made of electro zinc-plated galvanized steel to help prevent corrosion from chemicals or humidity. Open design suspends electrical and network cables from support ...



Grounding connectors may be used with aluminum or galvanized steel cable trays and aluminum or copper conductors. When mounted horizontally, the bolt may be used to replace one of the bolts in a ...



These ground clamps connect grounding wire to cable trays. They clamp the ground wire on one side and the cable tray on the other.



Specialized with battery rings on one end for effortless connection to your battery and exposed wire on the other end to lead directly into your charge controller, this wire makes the system ...



Choose from our selection of cable trays, including over 850 products in a wide range of styles and sizes. Same and Next Day Delivery.



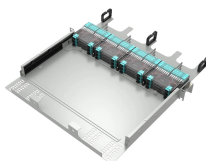
Thru-Grip™ WIRE-TYPE CABLE TRAY CLAMP For grounding applications on wire-basket type cable tray Use to connect single jumper-wire to tray sections



Cable Tray Clamps Used for bonding galvanized steel or aluminum cable trays to the grounding electrode system.



Attaches Wire Mesh Tray to Strut Without Bolts and Nuts or Tools, Hot Dipped Galvanized Finish for Exterior Use (Sold in Multiples of 50) Category: Cable Tray Fast Splicers. End Cap Kit, Black, Steel. ...



Cable tray length is selected based on the load to be supported, the distance between the supports (also referred to as the span), and handling and installation constraints.



WireRun ® Cable Trays can be installed either in a ceiling, in a raised floor or along a wall with brackets, and are easily altered to make turns to complete the path. Made of electro zinc-plated galvanized ...



High copper alloy ground connector for joining a range of cable to copper clad, galvanized steel, and stainless steel ground rods. Slips over end of rod, one-wrench installation.

Contact Us

For more information, pricing, or custom data center solutions, please contact us:

Website: <https://www.yoahorroenergia.es>

Email: hello@yoahorroenergia.es

Phone: +233 54 318 7269

Address: Plot 28, Spintex Road, Accra, Greater Accra, Ghana

This document is for informational purposes only. Specifications subject to change without notice.

