

G654 Fiber Optic Production



Overview

E is a single-mode optical fiber engineered specifically for ultra-long-haul and submarine networks. The superior attributes of TXF[®] optical fiber, compliant to ITU-T G. E, allow for the provision of an additional network margin that can be leveraged to enable reliable, high-data-rate transmissions over longer spans and extended reach. Over longer distances, such as between two data centres, signal regeneration or addition ng-distance transmission,” said Xavier Renard, Telecom Marketing Di ector at ACOME. E were introduced and have been extensively deployed worldwide. A2 fiber is strictly for short-run FTTH. Proven Export Quality: We have a verified track record of exporting finished G. E. In recent years, a new type of G. 654 fibre In the mid-1980s, in. As a leading fiber optic manufacturer with 21 years of experience, GL FIBER specializes in producing high-performance G. Below, we explain the technical differences between these two fiber types to help you choose the.

G654 Fiber Optic Production



To ensure the accuracy and precision of the manufacturing process, STL routinely calibrates and recertifies process equipment and measurement benches against internationally traceable standards ...



G.654 fiber is a single-mode fiber with a pure silica core, designed to minimize loss at a wavelength of 1550 nm. It was developed in the mid-1980s for long-distance submarine optical fiber ...



G.654.E, are contributing to evolve long-term network and transmission technologies. For example, combining G.654.E with G.652.D can maximise flexibility and futureproof the network," added ...



ACOME Group and Sumitomo Electric Industries, Ltd. have announced a new proposal for long-haul optical network cables that will "break through the glass ceiling" of data transmission ...



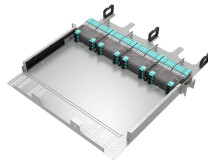
The G.654.E is a single-mode optical fiber with the larger effective area engineered specifically for ultra-long-haul and submarine networks.



Corning's TXF optical fiber is G.654.E compliant and the ultra-low-loss, large effective area terrestrial fiber is cost-effective for terrestrial core networks.



As a leading fiber optic manufacturer with 21 years of experience, GL FIBER specializes in producing high-performance G.654 fiber, including G.654.E and G.654.C, for long-haul and high ...



Characteristics of a cut-off shifted single-mode optical fibre and cable Superseded ...



Advance-110 and PureAdvance-125 fully complying with ITU-T G.654.E. By applying Sumitomo Electric's matured pure-silica core fiber technologies that have been cultivated since the first launch ...



In the mid-1980s, in order to meet the demand for long-distance communications over submarine cables, a pure quartz-core single-mode optical fibre was developed for use at 1550 nm wavelengths, where ...

Contact Us

For more information, pricing, or custom data center solutions, please contact us:

Website: <https://www.yoahorroenergia.es>

Email: hello@yoahorroenergia.es

Phone: +233 54 318 7269

Address: Plot 28, Spintex Road, Accra, Greater Accra, Ghana

This document is for informational purposes only. Specifications subject to change without notice.

