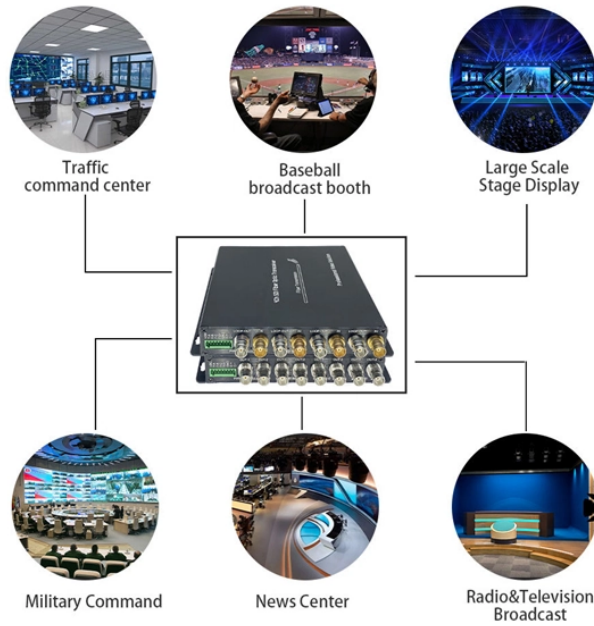


Functions of Distribution Network Automation Terminal Box



Functions of Distribution Network Automation Terminal Box



Introduction In modern FTTH and FTTx networks, several types of fiber management hardware ensure reliable optical connectivity from the central office to the end user. Fiber closure ...



The CKPM602 is a terminal for box-type distribution automation stations, providing local and remote monitoring, control, and fault detection functions for switchgear through the current, ...



A relatively comprehensive list of Primary and Secondary Distribution Automation functions is shown below, although this list will continue to grow as new concepts, technologies, and challenges inspire ...



Terminal Control Boxes are integral components of modern electrical systems, offering an organized, secure, and accessible solution for power distribution and connectivity across various industries and ...



It mainly monitors and controls the switching equipment in the distribution system and has functions such as fault location and isolation, system protection, etc.



The CWBC-02 Distribution Automation Feeder Terminal (Box-type FTU) is suitable for distribution networks with voltage levels of 10kV and above. It features monitoring and control functions for ...



Introduction In modern FTTH and FTTx networks, several types of fiber management hardware ensure reliable optical connectivity from the central ...



The GRT-D6000 station-type distribution network automation terminal (DTU) supports multi-serial ports, multiple Ethernet ports, multiple network segments, network switches, GPRS communication, ...



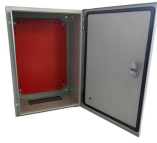
In summary, terminal boxes are essential in power distribution, industrial automation, and communication, ensuring reliable and safe electrical systems while providing convenience through ...



It integrates functions such as IEC 61850+GOOSE self-organizing network, fault isolation, microprocessor protection, fault indicators, and distribution network automation.



The main function of the SSR is to provide reliable, two-way, real-time communication between the IEDs and Remote Terminal Unit (RTU) devices located in the Secondary Substation and the backend ...



The GRT-D6000 station-type distribution network automation terminal (DTU) supports multi-serial ports, multiple Ethernet ports, multiple network segments, ...

Contact Us

For more information, pricing, or custom data center solutions, please contact us:

Website: <https://www.yoahorroenergia.es>

Email: hello@yoahorroenergia.es

Phone: +233 54 318 7269

Address: Plot 28, Spintex Road, Accra, Greater Accra, Ghana

This document is for informational purposes only. Specifications subject to change without notice.

