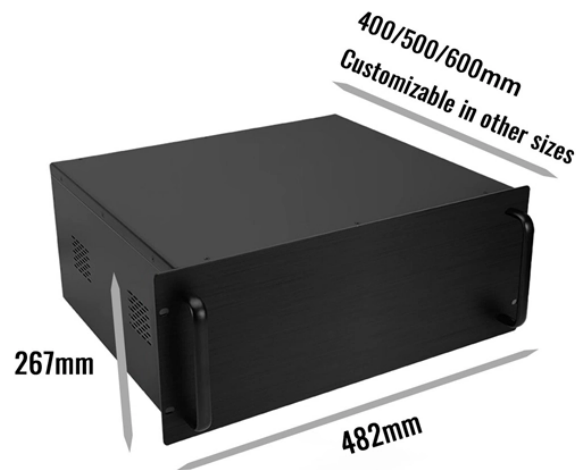


Function of the grounding bolt in the distribution box



Overview

The primary function of this screw is to bond the metal enclosure of an electrical box or device to the equipment grounding conductor (the bare or green wire). Power from factory ground must be installed by a qualified electrician. Each DISTRIBUTION BOX and controller must be grounded. When an electrical fault occurs, such as a hot wire touching the metal box, the screw provides a direct, low-impedance route for that stray. Bonding is the connecting together of metal parts of chassis, assemblies, frames, shields, and enclosures to reduce the effects of emi and ground noise. Today, electrical systems are essential for homes and industries.

Function of the grounding bolt in the distribution box



It acts as a protective enclosure that houses several key components, such as circuit breakers, fuses, and bus bars. These components work together ...



Each DISTRIBUTION BOX and controller must be grounded. On the US market, a 5.26 mm² (10 AWG) ground wire must be used, and in all other markets a 6 mm² must be used.



Connect an equipment grounding conductor directly from each chassis to an individual bolt on the ground bus. For a chassis with no ground stud, use a mounting bolt (Figure 5).



Your distribution box is mission control for electricity in any building. When grounding fails here, it's like having a spaceship without a heat shield—everything inside becomes vulnerable to surges, faults, ...



Connect the conductor from the panel ground bus or connector at the source to all items to which the conduits or raceways connect. Bond to a ground lug within each panel, box or equipment.



FUNCTION definition: 1. the natural purpose (of something) or the duty (of a person): 2. an official ceremony or a.... [Learn more.](#)



It's time you own your health. Function starts with 100+ lab tests and personalized protocols for instant action. Tracked over time in one secure place.



When an electrical fault occurs, such as a hot wire touching the metal box, the screw provides a direct, low-impedance route for that stray electrical current. This surge of fault current ...



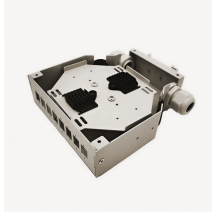
A solid understanding of the basics of functions, including the definition of a function, its notation, domain and range, and inverse functions, is essential for success in more advanced mathematical problems ...



The concept of a function was formalized at the end of the 19th century in terms of set theory, and this greatly increased the possible applications of the concept. A function is often denoted by a letter ...



A function is a relation that uniquely associates members of one set with members of another set. More formally, a function from A to B is an object f such that every a in A is uniquely ...



The simplest definition is: a function is a bunch of ordered pairs of things (in our case the things will be numbers, but they can be otherwise), with the property that the first members of the pairs are all ...



function, in mathematics, an expression, rule, or law that defines a relationship between one variable (the independent variable) and another variable (the dependent variable).



The primary function of the substation grounding system is to increase safety, both to persons and property. Secondly, it aids in system operation. Adequate ground systems are essential to attain ...



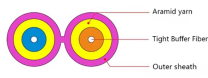
But a function doesn't really have belts or cogs or any moving parts, and it doesn't actually destroy what we put into it! A function relates an input to an output.



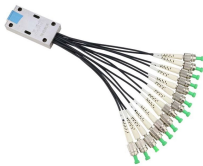
(1) The equipment grounding terminal of the building's disconnect enclosure. (2) The feeder equipment grounding conductor. (3) One of the building's grounding electrodes of the grounding electrode ...



In order to ensure the safety of the rainproof distribution board, all rainproof distribution boards should be grounded. So how should we protect it? Firstly, we ...



In this workshop, we will demystify the concepts of grounding as applicable to utility networks and industrial plant distribution systems as well as their associated control equipment.



If there is any damage or cracks in the electrical box, you should repair it first before grounding it. In addition, you also need to check whether the ground wire of the box has been...



Ground resistance measurements shall be made before the electrical distribution system is energized or connected to the electric utility company ground system, and shall be made in normally dry ...



function, office, duty, province mean the acts or operations expected of a person or thing. function implies a definite end or purpose or a particular kind of work.



We also give a “working definition” of a function to help understand just what a function is. We introduce function notation and work several examples illustrating how it works. We also define ...



Often, you land the incoming ground onto a backpanel-installed grounding terminal, bar, or lug. This connector links the ground conductor to enclosure backpanel.

Contact Us

For more information, pricing, or custom data center solutions, please contact us:

Website: <https://www.yoahorroenergia.es>

Email: hello@yoahorroenergia.es

Phone: +233 54 318 7269

Address: Plot 28, Spintex Road, Accra, Greater Accra, Ghana

This document is for informational purposes only. Specifications subject to change without notice.

