

Function of RJ45 optical module



Overview

RJ45 SFP modules connect traditional copper Ethernet cables to SFP switch ports initially intended for fiber optic connections. Rather than transporting light signals like fiber modules do, these adapters convert the electrical signal transmission over copper medium. Organizations that need to maintain “backward” RJ45 support can feel overwhelmed by a host of modules and solutions that attempt to balance compatibility, price, and. As organizations upgrade switches and routers with SFP ports while still relying on traditional RJ45 cabling, the SFP to RJ45 module has become an essential bridge between fiber-oriented hardware design and copper Ethernet connectivity. This article provides a comprehensive guide to SFP to RJ45. The RJ45 connector is one of the oldest and most common interfaces for network cabling, which is why over 100 Taoglas products include an RJ45 port. "RJ" means "registered jack" — a standardized telecommunication network interface for connecting voice and data equipment to a service provided by a local exchange. The interface type of the RJ45 optical module is RJ45. The RJ45 optical transceiver is a module that supports hot swapping. The package types are SFP, SFP+, GBIC, and so on.

Function of RJ45 optical module



RJ45 SFP modules connect traditional copper Ethernet cables to SFP switch ports initially intended for fiber optic connections. Rather than transporting light signals like fiber modules ...



Explore the working principles, structures, and performance metrics of optical modules, essential components of optical fiber communication systems. Learn ...



These converters typically feature an optical transceiver on one end and an RJ45 port on the other, bridging the gap between fiber-optic and copper-based networks.



RJ45 network connectors are essential components in modern networking, enabling fast, stable, and reliable communication in various applications. Whether you need connectors for home, ...



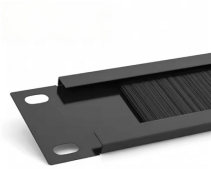
So, what exactly is an RJ45 optical transceiver? What role does it play? The interface type of the RJ45 optical module is RJ45. The RJ45 optical transceiver is a module that supports hot swapping. The ...



RJ45 connectors are the key part of Ethernet connectivity to transmit voice and data media. They were developed as much smaller and cheaper replacements to the older telephone ...



An RJ45 (Registered Jack 45) connector is a standardized 8-pin modular connector used for Ethernet networking. It connects twisted-pair copper cables (like Cat5e, Cat6, Cat6A, or Cat7) to ...



Explore the working principles, structures, and performance metrics of optical modules, essential components of optical fiber communication systems. Learn about key indicators such as average ...



Explore the features and benefits of RJ45 connectors. Learn about their design, advantages, limitations, and why they're essential for Ethernet networking.



Explore the features and benefits of RJ45 connectors. Learn about their design, advantages, limitations, and why they're essential for Ethernet ...



What is SFP to RJ45. An SFP to RJ45 module is a highly adaptable network optical transceiver that enables Ethernet connectivity over standard copper twisted-pair cables through an SFP port. It ...



To sum up, the RJ45 port module is a kind of module with low power consumption and RJ45 interface that is different from the optical module, and it has no less advantages than the ...

Contact Us

For more information, pricing, or custom data center solutions, please contact us:

Website: <https://www.yoahorroenergia.es>

Email: hello@yoahorroenergia.es

Phone: +233 54 318 7269

Address: Plot 28, Spintex Road, Accra, Greater Accra, Ghana

This document is for informational purposes only. Specifications subject to change without notice.

