

Function of Photovoltaic Module Combiner Box



Overview

A combiner box is a key DC distribution device used between PV strings and the inverter. Each string consists of solar modules wired in series, and the combiner box gathers multiple strings into a single output while ensuring safety and system efficiency. This device plays a significant role in both residential and commercial solar installations, particularly when. Modern solar power stations—from residential rooftops to 1500V industrial arrays—depend heavily on high-quality electrical enclosures, advanced protection components, and intelligent data systems to maintain long-term reliability. By using a combiner. Combiner boxes play an important role in photovoltaic (PV) installations. In a photovoltaic system, a combiner.

Function of Photovoltaic Module Combiner Box



PV combiner box is a crucial component used to simplify wiring connections and ensure safety when managing multiple PV strings simultaneously. It collects the energy produced by multiple PV strings ...



What Is a PV Combiner Box? A combiner box is a key DC distribution device used between PV strings and the inverter. Each string consists of solar modules wired in series, and the ...



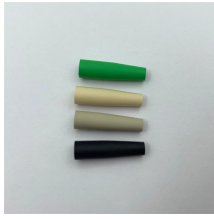
A combiner box in a PV system connects multiple solar panel strings, streamlining wiring, improving safety, and sending DC power to the inverter.



In a photovoltaic system, a combiner box acts as a central hub that consolidates and manages the direct current (DC) output of multiple solar panels. Its main purpose is to simplify the wiring structure, ...



Its primary job is to collect the DC output cables from multiple solar panel strings and merge them into a single main DC output cable that feeds the inverter's DC input terminals. Without ...



A combiner box merges multiple PV strings into one safe DC output, adds over-current fuses or breakers, includes surge (SPD) protection, and can add monitoring.



A PV combiner box connects photovoltaic strings and the inverter. It collects DC current from multiple strings and delivers it through a single output path, forming a structured connection between ...



What is a Combiner Box? A combiner box is an electrical device used in solar installations to combine the output current from multiple solar panels into ...



What is a Combiner Box? A combiner box is an electrical device used in solar installations to combine the output current from multiple solar panels into a single circuit, improving system ...

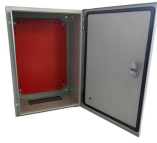


A solar combiner box is a crucial component in solar energy systems, designed to consolidate the outputs of multiple solar panel strings into a single output that connects to an inverter.

Rear of the optical fiber distribution box



A combiner box in a PV system connects multiple solar panel strings, streamlining wiring, improving safety, and sending DC power to the inverter.



Discover the solar combiner box, the essential component that manages, protects, and consolidates the DC power output of your array.

Contact Us

For more information, pricing, or custom data center solutions, please contact us:

Website: <https://www.yoahorroenergia.es>

Email: hello@yoahorroenergia.es

Phone: +233 54 318 7269

Address: Plot 28, Spintex Road, Accra, Greater Accra, Ghana

This document is for informational purposes only. Specifications subject to change without notice.

