

## Floor where the distribution box is located

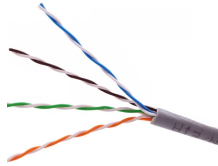


### Overview

Bottom Line Up Front: Your home's distribution box (electrical panel) is typically located in the basement, garage, utility room, or mounted outside near your electrical meter. To find it quickly, look for a rectangular gray metal box about the size of a medicine cabinet, often positioned close to. A distribution box is the heart of any electrical system. It is the transition point between the riser cable and the horizontal cable and provides operators with optimum flexibility. Article 314 applies to: These. Floor boxes are boxes made of steel/stainless steel and plastic, designed to be installed into raised access floors. They come in a range of sizes and there are different boxes for different types of flooring. How are they installed?

To install a floor box, you create a suitably sized cavity in the.

## Floor where the distribution box is located



Bottom Line Up Front: Your home's distribution box (electrical panel) is typically located in the basement, garage, utility room, or mounted outside near your electrical meter.



Floor-mounted distribution boxes are enclosures that stand alone and are put on the floor, usually against walls or in electric-only rooms. These strong cabinets have an open bottom and five ...



To install a floor box, you create a suitably sized cavity in the floor then place the box inside it so the lid is flush with the floor surface. You then connect the box to the ...



Efficient, flexible modular zone distribution for power, voice, and data under raised floors.



To install a floor box, you create a suitably sized cavity in the floor then place the box inside it so the lid is flush with the floor surface. You then connect the box to the cables that run under your floor.



The box has been designed so that it can be easily combined with the Scattoplast and Underfloor distribution systems both for traditional and for raised floors; it can also be used with trunkings for ...



Engineers are often looking for innovative ways to provide the appropriate power distribution equipment while NEC's requirement for safe working space in front, beside, and sometimes behind the electrical ...



Floor-mounted distribution boxes are enclosures that stand alone and are put on the floor, usually against walls or in electric-only rooms. These strong cabinets have an open bottom and five ...



What's the difference between a distribution box and a sub-panel? A distribution box typically refers to the main electrical panel that receives power from the utility service. A sub-panel is ...



Fibernet FTTH Floor distribution box designed to be install on each level of a multi-dwelling unit building for fiber to the home applications. It is the transition point between the riser cable and the horizontal ...



Regardless of the wiring method, box fill calculations apply equally to all cables. Use our conduit fill calculator to determine the calculation in your specific case.



Learn how to install a distribution box safely and correctly. Covers wiring, placement, standards, and expert tips for a compliant setup.

## Contact Us

For more information, pricing, or custom data center solutions, please contact us:

Website: <https://www.yoahorroenergia.es>

Email: [hello@yoahorroenergia.es](mailto:hello@yoahorroenergia.es)

Phone: +233 54 318 7269

Address: Plot 28, Spintex Road, Accra, Greater Accra, Ghana

This document is for informational purposes only. Specifications subject to change without notice.

