

Fiber-through wavelength division multiplexer

REINFORCED VIRGIN PVC TRUNKING

Superior Crush Resistance



37.6MPA
Tensile Strength



2856MPA
Elastic Modulus



9.8KJ/M²
Impact Strength



1.54G/CM
Density

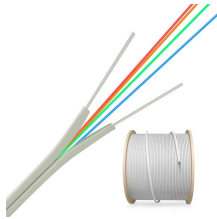
Overview

In fiber-optic communications, wavelength-division multiplexing (WDM) is a technology which multiplexes a number of optical carrier signals onto a single optical fiber by using different wavelengths (i.e., colors) of laser light. This technique enables bidirectional communications over a single strand of fiber (also called wavelength-division duplexing) as well as multiplication of capacity. The. SystemsA WDM system uses a at the to join the several signals together and a at the to split them apart. With the right type of fiber, it is possible to have a device that does both s. Originally, the term coarse wavelength-division multiplexing (CWDM) was fairly generic and described a number of different channel configurations. In general, the choice of channel spacings and frequency in these co.

Fiber-through wavelength division multiplexer



Wavelength division multiplexing, WDM, is a technology that increases bandwidth by allowing different data streams at different frequencies to be sent simultaneously over a single optical fiber network. In ...



Wavelength Division Multiplexing (WDM) enables multiple optical signals to travel through a single fiber by using different wavelengths of light. This optical multiplexing technology maximizes the capacity of ...



The implementation and application of Wavelength Division Multiplexing (WDM) technology revolutionizes the capacity and efficiency of fiber optic networks, enabling simultaneous ...



Wavelength Division Multiplexing (WDM) is a technique in fiber-optic communication systems that enables multiple optical signals with different wavelengths to be combined, transmitted, and ...



Wavelength Division Multiplexing (WDM) allows multiple optical signals to transmit over a single fiber by using different wavelengths of light. It increases fiber network capacity without ...



WDM Multiplexers and Demultiplexers combine and separate different wavelengths (colors) of light signals on a common fiber connection. This WDM technology can significantly increase the capacity ...



Wavelength division multiplexing (WDM) is a technology for increasing the transmission capacity of optical fiber communications by sending multiple data ...



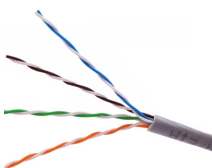
Wavelength division multiplexing (WDM) is a technology for increasing the transmission capacity of optical fiber communications by sending multiple data channels simultaneously through a single fiber, ...



FIBERONE® offers a complete line of wavelength division multiplexers, including WDM, CWDM, and DWDM modules. These wavelength division multiplexers enable fiber optic networks to mux or ...



In fiber-optic communications, wavelength-division multiplexing (WDM) is a technology which multiplexes a number of optical carrier signals onto a single optical fiber by using different ...



Discover how Wavelength Division Multiplexing (WDM) uses light to exponentially increase data transmission capacity in fiber optics.

Contact Us

For more information, pricing, or custom data center solutions, please contact us:

Website: <https://www.yoahorroenergia.es>

Email: hello@yoahorroenergia.es

Phone: +233 54 318 7269

Address: Plot 28, Spintex Road, Accra, Greater Accra, Ghana

This document is for informational purposes only. Specifications subject to change without notice.

