

# **Fiber optic terminal box with 2 inputs and 24 outputs**



## Fiber optic terminal box with 2 inputs and 24 outputs



We offer a wide range of 1-24 core FDB boxes and ODF cabinets for indoor/outdoor FTTX deployment. Durable, IP65 rated, and easy to install. Browse our models and get a wholesale quote.



The wall-mounted user cable terminal box, whose function is to provide the fusion of fibers, the fusion of fiber and tail fiber, and the connection of optical connectors.



Our terminal boxes support 4 to 24 fiber ports. Each port accommodates one SC simplex or LC duplex adapter. Integrated splice trays can hold up to 24 fusion splices or mechanical splices. Do you offer ...



Fibertronics Inc. offers rugged, compact fiber optic termination boxes designed to organize, protect, and secure fiber terminations and patch connections across diverse network environments.



The main products of TAKFLY include fiber optic patch cord, ...



FDB-24D-1 is able to hold up to 24 subscribers. It is used as a termination point for the feeder cable to connect with drop cable in FTTX network system. It integrates fiber splicing, splitting, distribution, ...



The 24F Terminal Access Box is a multi-purpose fiber terminal that can be splice-ready with pigtails or with one or two splitters, serving up to 24 SC ports. It is suitable for FTTx applications in multi ...



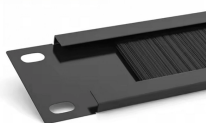
The HTB8015 24-Port Fiber Optic Terminal Box is a reliable indoor distribution solution for FTTH, telecom, and enterprise networks. Designed for wall-mounted installation, it provides a ...



24/48 Fibers Outdoor Wall Mountable Fiber Terminal Box Water-proof, anti-rust design for outdoor uses. Easy installations: Ready for wall mount - installation kits provided. Lower Insert loss and easy ...



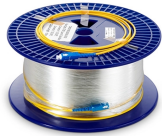
The fiber optic terminal box is designed for FTTx applications, accommodating at least 4-16 users. It provides ample space for splicing, splitting, storage, and cable management. Suitable for both indoor ...



FDB-24D-1 is able to hold up to 24 subscribers. It is used as a termination point for the feeder cable to connect with drop cable in FTTX network system. It integrates ...



The main products of TAKFLY include fiber optic patch cord, connector, adapter, optical coupler, attenuator, optic media converter, optic splice closure, optic terminal box, ODF etc, which are widely ...



We offer a wide range of 1-24 core FDB boxes and ODF cabinets for indoor/outdoor FTTX deployment. Durable, IP65 rated, and easy to install. Browse our models ...

## Contact Us

For more information, pricing, or custom data center solutions, please contact us:

Website: <https://www.yoahorroenergia.es>

Email: [hello@yoahorroenergia.es](mailto:hello@yoahorroenergia.es)

Phone: +233 54 318 7269

Address: Plot 28, Spintex Road, Accra, Greater Accra, Ghana

This document is for informational purposes only. Specifications subject to change without notice.

