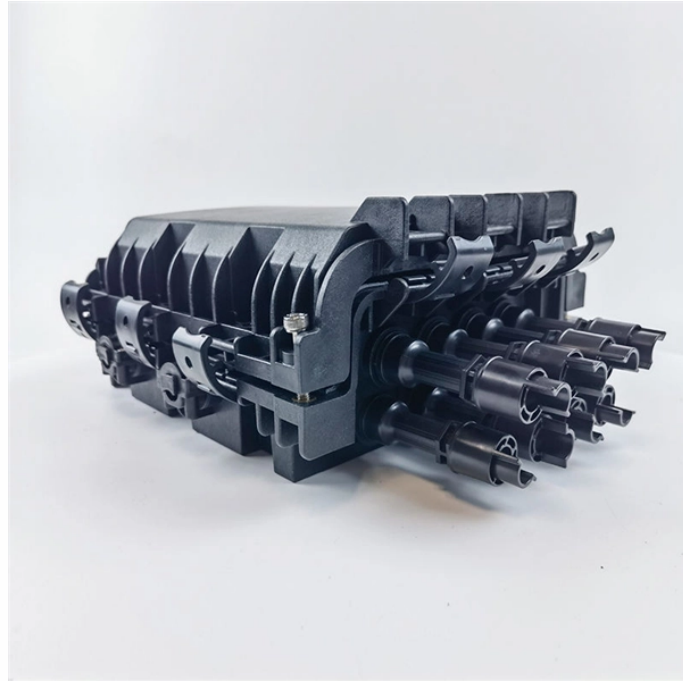


Fiber optic sensor mounted at an angle



Fiber optic sensor mounted at an angle



Here we designed and developed a simple and novel angle sensor measurement sensor using polymer optical fiber. The principle of the system mainly based on the twisted macro-bend ...



This paper proposed an optical fiber sensor for the measurement of angular displacement. The effect of beveled fiber angle on the detected light signal was investigated to find an appropriate mathematical ...



A simple fiber optic sensor for angle measurement is described in this paper. It is based on a fiber optic bundle, which is bifurcated ("Y" shape), having a semicylindrical disposition of the fibers in the ...



The physical, technical, and functional characteristics of signal transformation in the optical system of high-precision fiber-optic tilt angle sensors for a diagnostic system for...



ATO's high quality right angle fiber optic sensors are available in a variety of sizes: M3*0.5mm, M4*0.75mm, and M6*0.75mm thread sizes, with fiber optic cable lengths of 1m and 2m, and ...



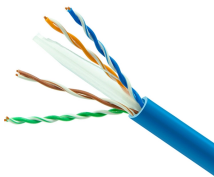
Products listed in this catalog offer the versatility and performance needed for industrial automation applications along with premium availability to help drive supply chain efficiency. Space saving, ...



Therefore, we have developed an angle sensor based on step-index profile plastic optical fiber (SI-POF), which is cost-effective and highly durable, in this study in order to overcome the limitations of existing ...



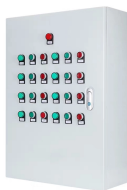
Fiber optic sensors are compact because the detection circuit is located in the amplifier, allowing for detection even in narrow spaces. Installation and adjustment are easy and the devices have high ...



A method of remote calibration and an algorithm for the sensor operation are proposed, which provide the possibility of calibration with-out violating the measurement mode.



Here, we present a comprehensive analytical model for multi-axis tilt sensing based on intensity-modulated optical fiber sensors (OFDSs).



ATO's high quality right angle fiber optic sensors are available in a variety of sizes: ...

Contact Us

For more information, pricing, or custom data center solutions, please contact us:

Website: <https://www.yoahorroenergia.es>

Email: hello@yoahorroenergia.es

Phone: +233 54 318 7269

Address: Plot 28, Spintex Road, Accra, Greater Accra, Ghana

This document is for informational purposes only. Specifications subject to change without notice.

