

## Fiber optic patch cord cannot be plugged into or unplugged from SC port



### Overview

Assuming you are investigating link failure (complete loss of connectivity), the first step is to check that the patch cords are properly terminated and connected to the network ports. Have you ever found yourself holding an SC patch cable and suddenly realized your device only has LC ports?

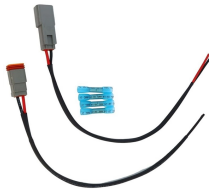
Or maybe you plugged in what appeared to be the correct type of connector to your device, only to notice the network performance going down the tubes?

If you have ever experienced either of. The bad news is that there could be several reasons why this is happening. Here's a quick guide to diagnosing and fixing the issue so your network can run smoothly again. Not all patch cords are created equal. Cheap, low-quality cables can degrade over time, leading to poor performance. If you suspect a. Fiber optic networks are celebrated for their speed and reliability, but even the best systems can encounter problems.

## Fiber optic patch cord cannot be plugged into or unplugged from SC



Struggling with poor connection errors even when your patch cord is securely plugged in? Learn how to troubleshoot the issue using Patch Cord Adaptors and Fluke Networks tools.



A comprehensive guide to fiber optic connectors including FC, SC, LC, ST, and MPO/MTP types.



The entire cable path (patch cords plus the permanent link) is referred to as a channel link. Assuming you are investigating link failure (complete loss of connectivity), the first step is to ...



The entire cable path (patch cords plus the permanent link) is referred to as a channel link. Assuming you are investigating link failure (complete loss of ...



There can be several issues with fiber optic adapters that can have detrimental effects on signal loss and network performance. A common mistake is to plug in connectors without cleaning ...



Learn how to troubleshoot fiber networks. Identify common issues like high loss, dirty connectors, and signal drops, with practical solutions for optical links.



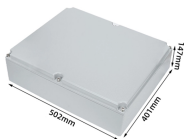
Troubleshoot fiber optic issues like a pro with our expert guide. Resolve common problems and ensure seamless connectivity.



Problems within a fiber link can occur due to a wide variety of reasons. A very common problem is that a connector is not fully engaged - often hard to notice in a crowded patch panel.



Please take care that you do not touch the sensitive ends of the fibre-optic cable after removing the protection caps. Insert the fibre-optic patch cable until you hear a click.



This piece looks at fiber optic SC connectors in detail, including their designs, benefits, how they should be installed, and some tips for doing so correctly, among other things.



Despite their essential role, fiber optic patch cords can encounter various problems that may compromise network performance. Understanding these common issues and their solutions is vital ...

## Contact Us

For more information, pricing, or custom data center solutions, please contact us:

Website: <https://www.yoahorroenergia.es>

Email: [hello@yoahorroenergia.es](mailto:hello@yoahorroenergia.es)

Phone: +233 54 318 7269

Address: Plot 28, Spintex Road, Accra, Greater Accra, Ghana

This document is for informational purposes only. Specifications subject to change without notice.

