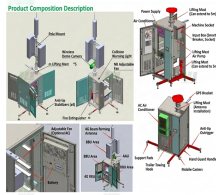


# Fiber optic cables that cannot be detected by the fiber optic cable survey instrument



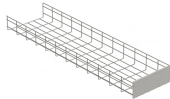
## Fiber optic cables that cannot be detected by the fiber optic cable s



In an underground utility, a fibre optic cable is a cable that cannot be easily detected because it is not a metal, and the material cannot drain an electromagnet.



Learn about the best methods for locating fiber optic cables, who you need to call, and whether you should outsource to a professional.



Locating buried fiber optic cables is a critical task that requires precision and care. By using the right tools and following best practices, you can ensure the safety of your project and the ...



If a direct-buried fiber cable does not have metallic armor or a tracer wire installed with it, it is non-locatable using electromagnetic locating equipment. There is no conductive pathway for the ...



Options for physically tracing active fiber optic cables. I have a project where I will need to do a end to end tracing of thousands of active single mode duplex cables because they were ...



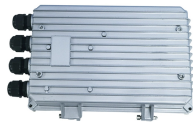
A special challenge is the detection of optical cables due to the material they are made of, the depth at which they are placed, and their smaller dimensions.



The intensity of the magnetic field is lower further away from the cable. Consequently, cables become harder to locate the more deeply they are buried. The locator also measures the ...



A special challenge is the detection of optical cables due to the material they are made of, the depth at which they are placed, and their smaller dimensions ...



Abstract - The detection of buried Fibre Optic (FO) cables in an urban environment is a problem when using GPR. The fibres themselves are not detectable as they are essentially sand.



However, this method cannot detect fiber optic lines that are on their own. Some utility providers overcome this limitation by attaching a metallic tracer cable alongside the nonmetallic utility line to ...



Many 3 mm patch lead cables readily allow the light through, however some colors (particularly purple and black) seem to be opaque to red light, and may not show anything. It is better to verify expected ...

## Contact Us

For more information, pricing, or custom data center solutions, please contact us:

Website: <https://www.yoahorroenergia.es>

Email: [hello@yoahorroenergia.es](mailto:hello@yoahorroenergia.es)

Phone: +233 54 318 7269

Address: Plot 28, Spintex Road, Accra, Greater Accra, Ghana

This document is for informational purposes only. Specifications subject to change without notice.

