

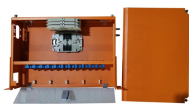
Fiber laser pointer diode



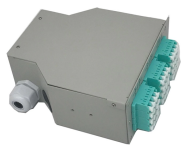
Fiber laser pointer diode



Dual-wavelength laser diodes with SMA connector for 200 μm or 400 μm MM fiber (fiber available optionally), output powers up to 7 W, and a 650 nm 2mW aiming beam. Standard configurations at ...



I was using a module capable of over 30 watts. That said, you can point out any laser invisible or visible spectrum or not is dangerous if over so many milliwatts and I would have to agree. ...



Single-emitter laser diodes are well suited for pumping fiber lasers for industrial and scientific applications. In addition, we offer diode chips specifically tailored for the rigorous environmental ...



A fiber-coupled diode laser is a laser diode where the output light is permanently directed into an optical fiber. This setup allows the light to be conveniently delivered from the laser source to the point of ...



Industrial and Pointing Lasers Machine Vision Laser Development Kit Features a 660nm, 35mW Red Laser Diode MORE



The FRPM-639-01 laser pointer is a mini size laser pointer with high reliability, stability, and polarization extinction ratio. It has a typical output power of 8mW and a fiber coupling efficiency of up to 45%. It is ...



Pigtailed Laser Diode Modules feature an integrated 1m long, single mode fiber with an FC/PC connector. These laser diodes also feature an integrated driver for plug and play operation, only ...



Professional fiber optic testing tool available in pen and handheld red laser source, providing on time and accurate visual fault location of fiber bends, breaks, OTDR dead zone fiber fault etc.



Shop DigiKey's large in-stock selection of Laser Diodes, Modules. View inventory, pricing and order now for same day shipping!



The laser chip and package are optimized for subnanosecond pulse operation. Processes and techniques of coupling the fiber to the laser allow high peak ...



The laser chip and package are optimized for subnanosecond pulse operation. Processes and techniques of coupling the fiber to the laser allow high peak output powers that are very stable with ...

Contact Us

For more information, pricing, or custom data center solutions, please contact us:

Website: <https://www.yoahorroenergia.es>

Email: hello@yoahorroenergia.es

Phone: +233 54 318 7269

Address: Plot 28, Spintex Road, Accra, Greater Accra, Ghana

This document is for informational purposes only. Specifications subject to change without notice.

