

Fiber Optic Terminal Box 24-Port 48-Core Rack-Mounted LC



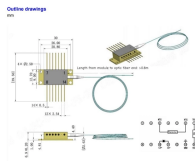
Fiber Optic Terminal Box 24-Port 48-Core Rack-Mounted LC



24 core SC / 48 core LC fiber distribution box for the last mile installation. The Fiber Optic Distribution Box features a convenient flip-up design, facilitating effortless fiber management during installation. ...



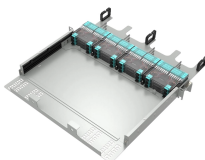
This Fiber Terminal box is for indoor/outdoor application, with 24 fiber termination ...



This Fiber Terminal box is for indoor/outdoor application, with 24 fiber termination capacity (48 fiber for LC connectors). It is usually located in the user access point, to terminate, distribute or trunk fiber ...



Our Preloaded Patch Panels are a very affordable option for organizing fiber optic networks. Available in Single and Multi-mode options, these loaded Fiber Distribution boxes come in 12, 24, 36, 48, 72 96 ...



Designed to meet the demanding needs of modern fiber optic networks, this Fiberhome terminal box combines a compact rack-mounted structure with a high port and core count for maximum efficiency. ...



FYBOPTWU-24 Duplex Singlemode 48 Port LC Fiber Optic Rack Mount Enclosure Box + Splice Trays Fiber LC-UPC Kit (Include Pigtail & Couplers), 48 Core LGX Patch Panel Box fits for 19" Racks Cabinet



ODF series indoor optical fiber distribution box is used in the terminal access link of FTTH system. It is a device that splices, distributes, and splits optical fibers and provides protection and management of ...



Buy 24 Duplex 48 Port LC-OS1 Rack Mount Enclosure Box Fiber SingleMode LC-UPC Kit Fits 19" Racks Cabinet (Include 2Pcs Splice Trays 48 Strand Pigtail 1M Cables Spool+24 Core LGX Loaded ...



ODF series indoor optical fiber distribution box is used in the terminal access link ...



Find advanced 48 core fiber termination box 24 ports answers for quick and dependable data flow. Use modern technologies to improve connection for flawless communication.



Premium-Line FTTH distribution box is aim designed for multi-purpose applications in FTTH projects, the dual layer design supports direct termination, and also FTTH distributions via mini splitter built in, ...



This 1U sliding type rack mount terminal box is a high quality fiber optic patch panel. With 48 core and 24 port design, it offers efficient optical signal transmission.

Contact Us

For more information, pricing, or custom data center solutions, please contact us:

Website: <https://www.yoahorroenergia.es>

Email: hello@yoahorroenergia.es

Phone: +233 54 318 7269

Address: Plot 28, Spintex Road, Accra, Greater Accra, Ghana

This document is for informational purposes only. Specifications subject to change without notice.

