

Fiber Optic Switch ETH



Overview

MCV1-FO-ETH is an Industrial 10/100 Mbps Ethernet to fiber optics converter. It's commonly used to interconnect industrial devices PLC's, workstations, routers and servers. Moxa's Ethernet to Fiber media converters feature innovative remote management, industrial-grade reliability, and a flexible, modular design that can fit any type of industrial environment. Flexible Network Expansion— Apply the SEL-2725 as an unmanaged switch or as a media converter. VERSITRON manufactures a wide range of fiber optic switches that provide links for your 10Base, 100Base, 1000Base Gigabit, and 10 Gigabit networks simultaneously. Various port sizes are available ranging from 4 up to 52 ports. They connect computers, sensors, and other devices to the same network so they can talk to each other, access the Internet, and provide you with real-time. The ETH-FIBER-SM-ST or ETH-FIBER-SM-SC is a bi-directional externally powered 10/100 Ethernet to Single Mode Fiber Optic Converter which converts a standard 10/100 Ethernet to SC or ST connector type fiber optic link. Switch or Router) as well as security.

Fiber Optic Switch ETH



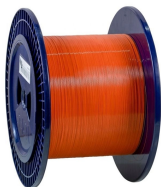
Converts 10 or 100M Ethernet to Optical Fiber Signals and vice versa. Transmits 10 / 100M Ethernet data over a long distance through fiber optic cables (multi-mode: 3 miles or 5 km).



The TC3240 4-port Switching/Bridging Fiber Optic Ethernet Media Converter converts or connects UTP (10/100Base-TX) networks to Fiber Optic (100Base-FX) networks.



Choose from our selection of fiber optic ethernet switches, including DIN-rail mount ethernet switches, light duty ethernet switches, and more. Same and Next Day Delivery.



The ETH-FIBER-SM-ST or ETH-FIBER-SM-SC is a bi-directional externally ...



The SEL-2725 is an unmanaged five-port switch and copper-to-fiber media converter. Apply to build reliable, safe Ethernet networks in electrical substations, plants, and other mission critical sites.



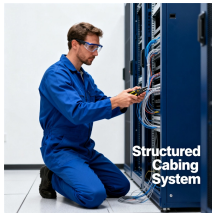
For high-level immunity to interference and long transmission ranges in industrial applications, media converters transparently convert Ethernet data to fiber optics. Depending on the device and cable, ...



LAN to Fiber Converter: These Ethernet-over-fiber kits extend Ethernet over fiber optic cable for IP-over-Ethernet-over-fiber using multimode or singlemode fiber up to 12.4 miles (20 km).



The ETH-FIBER-SM-ST or ETH-FIBER-SM-SC is a bi-directional externally powered 10/100 Ethernet to Single Mode Fiber Optic Converter which converts a standard 10/100 Ethernet to SC or ST connector ...



How does it work? MCV1-FO-ETH is an Industrial 10/100 Mbps Ethernet to fiber optics converter. It's commonly used to interconnect industrial devices PLC's, workstations, routers and servers. Its ...



Moxa's Ethernet to Fiber media converters feature innovative remote management, industrial-grade reliability, and a flexible, modular design that can fit any type of industrial environment.



We offer solutions that provide seamless transmission and conversion from Ethernet media to multimode or singlemode fiber. Our Ethernet network switches with fiber ports comes in managed or ...

Contact Us

For more information, pricing, or custom data center solutions, please contact us:

Website: <https://www.yoahorroenergia.es>

Email: hello@yoahorroenergia.es

Phone: +233 54 318 7269

Address: Plot 28, Spintex Road, Accra, Greater Accra, Ghana

This document is for informational purposes only. Specifications subject to change without notice.

