

Fiber Optic Cable Pole Setting Techniques



Fiber Optic Cable Pole Setting Techniques



Support structures for fiber optic cable installations should be completed before the installation of the fiber optic cable itself. Outside plant structures should be installed in conformance with all permits ...



Learn the key types of aerial fiber cables, essential pole hardware, and field-safe installation practices to ensure reliable overhead fiber deployment.



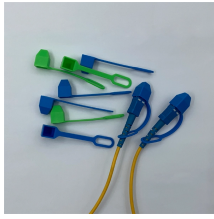
Fiber optic cable sequential numbers are required at each pole location and vault wall. Sequential numbers will identify conduit length, and slack left in vaults and at poles.



Deploying fiber above ground on poles or towers removes the need for underground digging and is particularly useful when the ground is uneven, rocky or both. Aerial installation is generally much less ...



The following applies to all fiber count gel-free and gel-filled armor ribbon cables installed in aerial plant, including down pole pedestal turn-ups: When jacket opening is made for a splice closure, pedestal, ...



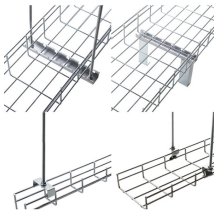
This comprehensive guide delves into the installation requirements, explores the two primary cable types—self-supporting and messenger-supported—and offers ...



This comprehensive guide delves into the intricacies of fiber optic installation, exploring topics ranging from cable types and pre-installation considerations to execution, safety protocols, ...



1.1 This practice covers the basic guidelines for installation of aerial fiber-optic cable. It is intended for personnel with prior experience in planning, engineering, or placement of aerial cable.



This document provides standards and guidelines for aerial installation of fiber optic cables including pole setting, grounding, cable runs between poles, and fiber optic cable handling.



There are two methods to install overhead fiber optic cables: the moving reel method and the stationary reel method.



What are the different methods of preparing and installing aerial fiber and how do you ensure you achieve a successful deployment? It's all in the blog >>



This comprehensive guide delves into the installation requirements, explores the two primary cable types—self-supporting and messenger-supported—and offers practical insights to ensure optimal ...



Learn the key types of aerial fiber cables, essential pole hardware, and field-safe installation practices to ensure reliable overhead fiber deployment.

Contact Us

For more information, pricing, or custom data center solutions, please contact us:

Website: <https://www.yoahorroenergia.es>

Email: hello@yoahorroenergia.es

Phone: +233 54 318 7269

Address: Plot 28, Spintex Road, Accra, Greater Accra, Ghana

This document is for informational purposes only. Specifications subject to change without notice.

