

# Fiber Optic Cable Equipment Room Cabinet Installation Method



## Fiber Optic Cable Equipment Room Cabinet Installation Method



The work covered here consists of the furnishing of all necessary labor, supervision, materials, accessories, parts, equipment, and services to provide and install a complete freestanding ...



Do not assume laser power is turned off or the fiber is disconnected at the other end. Use the following procedures to complete the splicing of the OSP and IFC fibers.



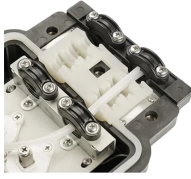
This comprehensive guide delves into the intricacies of fiber optic installation, exploring topics ranging from cable types and pre-installation considerations to execution, safety protocols, ...



Considering economic factors like the footage an installation crew achieves and the cost of labor per person per hour to install fiber infrastructure, operators and contractors can decide which method is ...



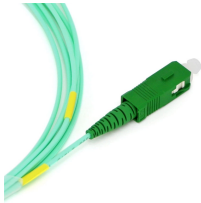
The information contained in this manual should serve as a guide to proper handling, installing, testing, and for troubleshooting problems with fiber optic cables.



In this article, we will discuss the proper installation sequence and layout for fiber optic equipment in a fiber optic cabinet, ensuring optimal functionality and ease of maintenance.



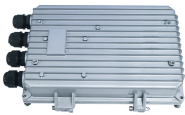
All pulling equipment and hardware which will contact the cable during installation must maintain the cable's minimum bend radius. Such equipment includes sheaves, capstans, bending shoes, and ...



The type of fiber optic cable and the fibers in the cable should be chosen appropriate for the type of communications system(s) being supported, the type of installation and the environment in which the ...



Learn how to install a fiber distribution cabinet step by step, including mounting, cable routing, grounding, and testing for FTTH networks.



This fiber optic installation method statement covers the termination of fiber optic cables with patch panel, network distribution cabinet NDC and door junction box ...



The cables shall be installed from the Work Area Outlet to the Telecommunications Room (TR) located on the same floor and routed to the appropriate rack serving that area and terminated as specified in ...



Intuitive buffer tube and subunit slack routing prevents cable tie-in's, utilizing a clockwise routing scheme to allow quick and easy re-entry after initial deployment or to add additional capacity.

## Contact Us

For more information, pricing, or custom data center solutions, please contact us:

Website: <https://www.yoahorroenergia.es>

Email: [hello@yoahorroenergia.es](mailto:hello@yoahorroenergia.es)

Phone: +233 54 318 7269

Address: Plot 28, Spintex Road, Accra, Greater Accra, Ghana

This document is for informational purposes only. Specifications subject to change without notice.

