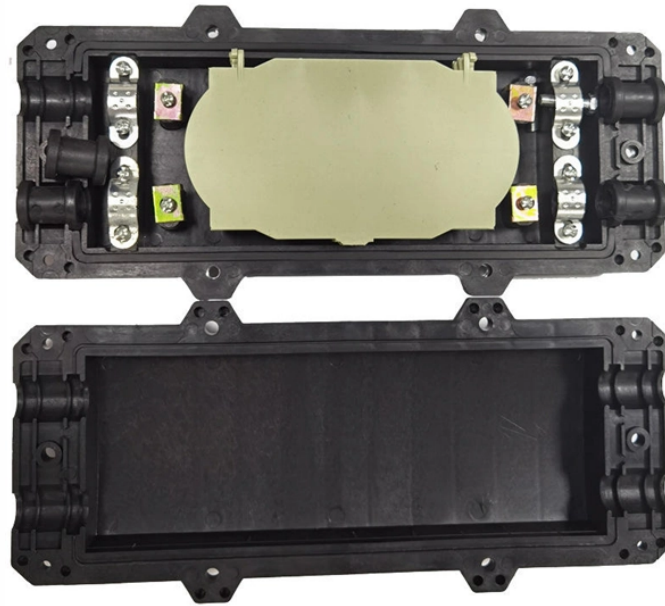


FC30 Expansion Interface



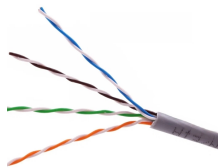
Overview

The modules offer 12 inputs and 8 outputs, supporting fast counters, interrupt inputs, an incremental encoder, and an analog potentiometer for fine-tuning, alongside a flexible timer function and extension interface for remote expansion. Below you will find brief information for FC20, FC21, FC22, FC23, FC30, and FC34. These CPU I/O Modules feature a powerful AMD processor, a flash disk, and Ethernet 10BASE T (on FC34). Page 4. Or how I (almost) interfaced an Yaesu FT-891 radio to an Icom tuner. I recently decided to replace my Icom IC708G in the car, as it had a weird ALC fault on transmit. The ultra-compact package provides reliable connectivity and can be easily embedded in size-constrained applications. I made TTL to 232 converter and try to upload plc program but there is no response and no any error. now my question is, which.

FC30 Expansion Interface



PS1 SM14 cable is used to interface this plc.. i need internal diagram of PS1 SM14 cable.. this is TTL-232 converter.. .. I made my own TTL to 232 converter but no response..



I had a massive step up from research that was done by John Price - WA2FZW, in a document that he published in the files section of the FT891 Groups page (FT-891 to MFJ-939Y ...



The Quectel Wi-Fi Modules offer surface-mount technology (SMT) for durable and rugged designs. The modules have a variety of features, including a compact form factor, low power ...



In order to connect an FEC as a remote expansion you require an FEC KSD4 cable. The remote expansion is configured and actuated using the provided program library.



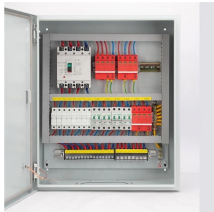
This manual provides technical information necessary for servicing the FC-30 Automatic Antenna Tuner. warranty, and may be illegal in some countries. for damage that may occur as a result of ...



FC-50 Physical Connection
Yaesu Logical Protocol
AH-4 Physical Connection
Tune Power
The first step was to break out the cable between the FT-891 and the FC-50. A little research showed me that the cable had the following pinout; 1. Pin 1 - +13V 2. Pin 2 - TX Gnd (Pulled low by the radio on TX) 3. Pin 3 - Ground 4. Pin 4 - TX Data (TTL Level) 5. Pin 5 - RX Data (TTL Level) 6. Pin 6 - Tuner presence detection (Grounded by the tuner)...See more on vk1zdj Missing: Expansion Interface
Must include: Expansion Interface
Scribd



The FEC-EXT interface works using TTL levels (5V). Only use the relevant accessory, e.g. SM 14.



The FC-30 includes a cooling fan to ensure thermal stability of the elements within its compact case
The FC-30 Automatic Antenna Tuner responds to control commands from the FT-897 Transceiver, ...



They feature a powerful AMD processor, flash disk, and Ethernet connectivity (FC34). The modules offer 12 inputs and 8 outputs, supporting fast counters, interrupt inputs, an incremental encoder, and an ...



The FC-30 includes a cooling fan to ensure thermal stability of the critical matching A) By default, the FC-30 is only engaged in the trans- case half that has a. elements within its compact case. mit ...



View and Download Beck FEC FC20 manual online. CPU I/O modules. FEC FC20 i/o systems pdf manual download. Also for: Fec fc21, Fec fc30, Fec fc22, Fec fc23, Fec fc34.

Contact Us

For more information, pricing, or custom data center solutions, please contact us:

Website: <https://www.yoahorroenergia.es>

Email: hello@yoahorroenergia.es

Phone: +233 54 318 7269

Address: Plot 28, Spintex Road, Accra, Greater Accra, Ghana

This document is for informational purposes only. Specifications subject to change without notice.

