

Eye diagram shielding margin



Eye diagram shielding margin



The mask margin is a comprehensive indicator used to assess whether an eye diagram meets industry standards. It represents how much the mask edges can be expanded before intersecting with the ...



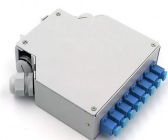
It quantifies the robustness of the signal in the presence of eye closure, jitter, and environmental stress, and is an essential step in validating design compliance beyond the “pass/fail” of a static eye diagram.



Discover how eye diagrams go beyond compliance testing to reveal signal integrity issues, timing margins, and design flaws, ensuring reliable high-speed communication in PCB systems.



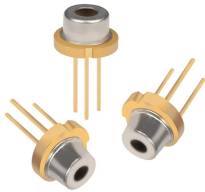
An eye diagram is generated by superimposing multiple cycles of a digital signal to form a pattern that resembles an eye. This visualization helps in assessing various parameters that indicate ...



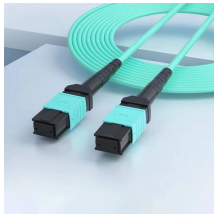
In the following, we discuss to measure and simulate eye diagrams and how to determine the eye and eye margins. In Appendix C, we discuss the related subject of jitter measurement.



-If signal integrity is poor, eye diagrams can violate per- defined limits specified by the eye mask. -A poor eye diagram can cause the receiver to not recover the data, then link drops out or data stream ...



Margins indicate areas that are to contain a specified number of hits (violations within the mask region) in order to comply with testing standards. You can use this information to determine by what level the ...



Optimize the time coordinates for the position of the mask in an eye for the best height margin or best width margin. This argument overwrites the OptimizeTime property of the eyeMask object.



Learn how an eye diagram optical transceiver reveals jitter, dispersion, and margin in real deployments, with selection checks and troubleshooting steps.



In this article, you'll learn how eye patterns are generated and how to analyze eye diagrams for signal integrity by evaluating the eye height, width, jitter, and amplitude.

Contact Us

For more information, pricing, or custom data center solutions, please contact us:

Website: <https://www.yoahorroenergia.es>

Email: hello@yoahorroenergia.es

Phone: +233 54 318 7269

Address: Plot 28, Spintex Road, Accra, Greater Accra, Ghana

This document is for informational purposes only. Specifications subject to change without notice.

