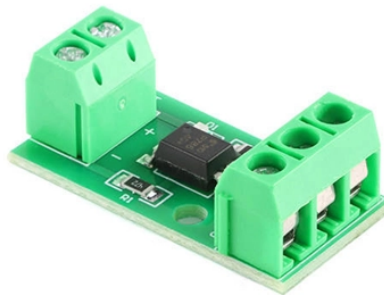


Estimated size of the distribution box



Overview

The size of a Distribution Box is measured in amperes (Amps), indicating the total amount of electricity it can safely handle. Modern Standard: For an average-sized home today, 200-amp service is the standard recommendation. How to choose a distribution box of the right size for a project based on load current?

Get it right the first time with this comprehensive guide. If you're like most electrical professionals, picking the right distribution box for your project can feel like navigating a maze. Picking the right size helps you stay safe, follow. Whether it's a small electrical breaker box in a residential property or a panel medium voltage cabinet in industrial environments, selecting the right type, size, and configuration is critical. This guide explores control panels, electrical boxes, breaker panels, bus bars, junction boxes, and. To choose a home distribution box, you must count your circuits and add 30% spare space. Then, select a main switch that handles your total load. Finally, choose safety devices like RCBOs and Surge Protection Devices (SPD) for the best protection against faults and lightning. You lower the chance of circuits getting too hot or

overloaded when you pick the right box for your needs.

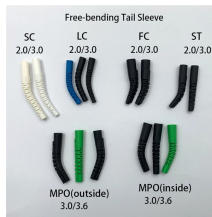
Estimated size of the distribution box



Choosing the right electrical box size is crucial for safety and efficiency. Consider the number of devices and future upgrades to avoid overcrowding. Single-gang boxes are ideal for one ...



Struggling with distribution box selection? Our guide covers sizing, key features, safety standards (UL/CE), and best outdoor materials. Make the right choice!



In this guide, I'll walk you through a practical, step-by-step process to size your distribution box based on actual load current. We'll cover everything from understanding your circuits to planning for future ...



Learn how to choose the right home distribution box with our expert guide. Compare circuit capacity, IP ratings, breaker types & avoid common mistakes.



Choose the right size and setup for multiple circuit breakers in your distribution box to ensure safety, code compliance, and room for future upgrades.



The size of a Distribution Box is measured in amperes (Amps), indicating the total amount of electricity it can safely handle. Modern Standard: For an average-sized home today, 200-amp service is the ...



The document provides details for designing the electrical distribution box and circuits for a residence. It includes specifications for the main circuit breaker such as size, type, and tripping capacity.



Explore standard panel sizes, applications, and key differences for residential, commercial, and industrial use.



This guide explains standard electrical box dimensions by type, compares common sizes, and helps you select the right box for residential, commercial, and light industrial applications.



This ultimate guide explains what a distribution box does, its internal components, common types, real-world applications, and how to select the right DB Box for your project.

Contact Us

For more information, pricing, or custom data center solutions, please contact us:

Website: <https://www.yoahorroenergia.es>

Email: hello@yoahorroenergia.es

Phone: +233 54 318 7269

Address: Plot 28, Spintex Road, Accra, Greater Accra, Ghana

This document is for informational purposes only. Specifications subject to change without notice.

