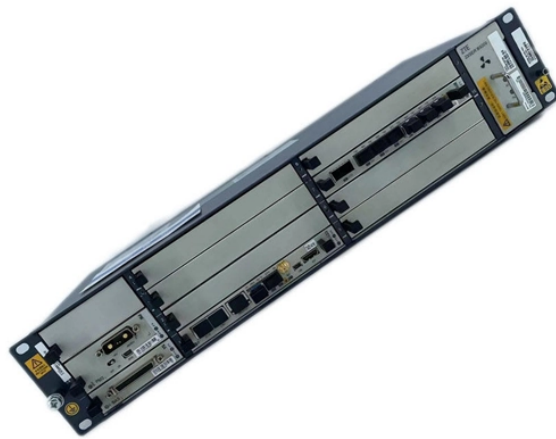
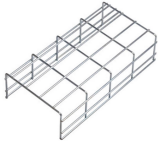


## EMT and IMC cable trays



## EMT and IMC cable trays



Secures and bonds metal conduit (rigid steel or aluminum, IMC and EMT) to the side rails of steel or aluminum cable trays without drilling or welding the tray. Fast installation and low product cost.



O-Z/Gedney Tray-Bond™ Cable Tray Clamp, Type CTC, 2-1/4 in Length, 2-7/8 in Width, 3-1/4 in Height, 1/4 in Thickness, For Use With: 1 to 1-1/4 in EMT/IMC/Rigid Conduit, Malleable Iron, Mechanically ...



For connecting and grounding rigid conduit, IMC, or EMT to cable trays. Secures and bonds metal conduit (rigid steel or aluminum, IMC and EMT) to the side rails of steel or aluminum cable trays ...



Conduit Cable Tray CI Brand Name Tray-Bond; Type Right Angle; Trade Size 1 to 1-1/4 Inch; Conduit Size 1 to 1-1/4 Inch (EMT/IMC/Rigid); Material Malleable Iron; Finish Galvanized; Approval ...



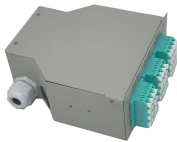
Explore sheet steel and wire mesh cable tray for robust cable management. Ideal for various environments, ensuring safety, efficiency, and durability.



O-Z/Gedney CTC conduit cable tray clamps are used for connecting and grounding rigid conduit, IMC, or EMT to cable trays. They secure and bond metal conduit (rigid steel or aluminum, IMC and EMT) ...



t, IMC, or EMT to cable trays. Secures and bonds metal conduit (rigid steel or aluminum, IMC and EMT) to the side rails of steel or aluminum cable trays without drilling or welding the tray. On the 1 1/2" ...



How do they intend to properly secure both the MC and EMT to the j-box's knock-out correctly and simultaneously, given that the connectors of the two types are quite different and will ...



Raceways, conduit, and cable trays are an essential part of any infrastructure that relies on electricity. This article will discuss types of raceways, conduits, and cable trays, as well as the different ...



Crouse-Hinds series LCC cable tray conduit clamps provide a means of clamping metal conduit (rigid steel or aluminum, IMC and EMT) to cable tray to allow for the safe exit of power and/or control ...

## Contact Us

For more information, pricing, or custom data center solutions, please contact us:

Website: <https://www.yoahorroenergia.es>

Email: [hello@yoahorroenergia.es](mailto:hello@yoahorroenergia.es)

Phone: +233 54 318 7269

Address: Plot 28, Spintex Road, Accra, Greater Accra, Ghana

This document is for informational purposes only. Specifications subject to change without notice.

